



Clarke Avenue, TW3

£340,000

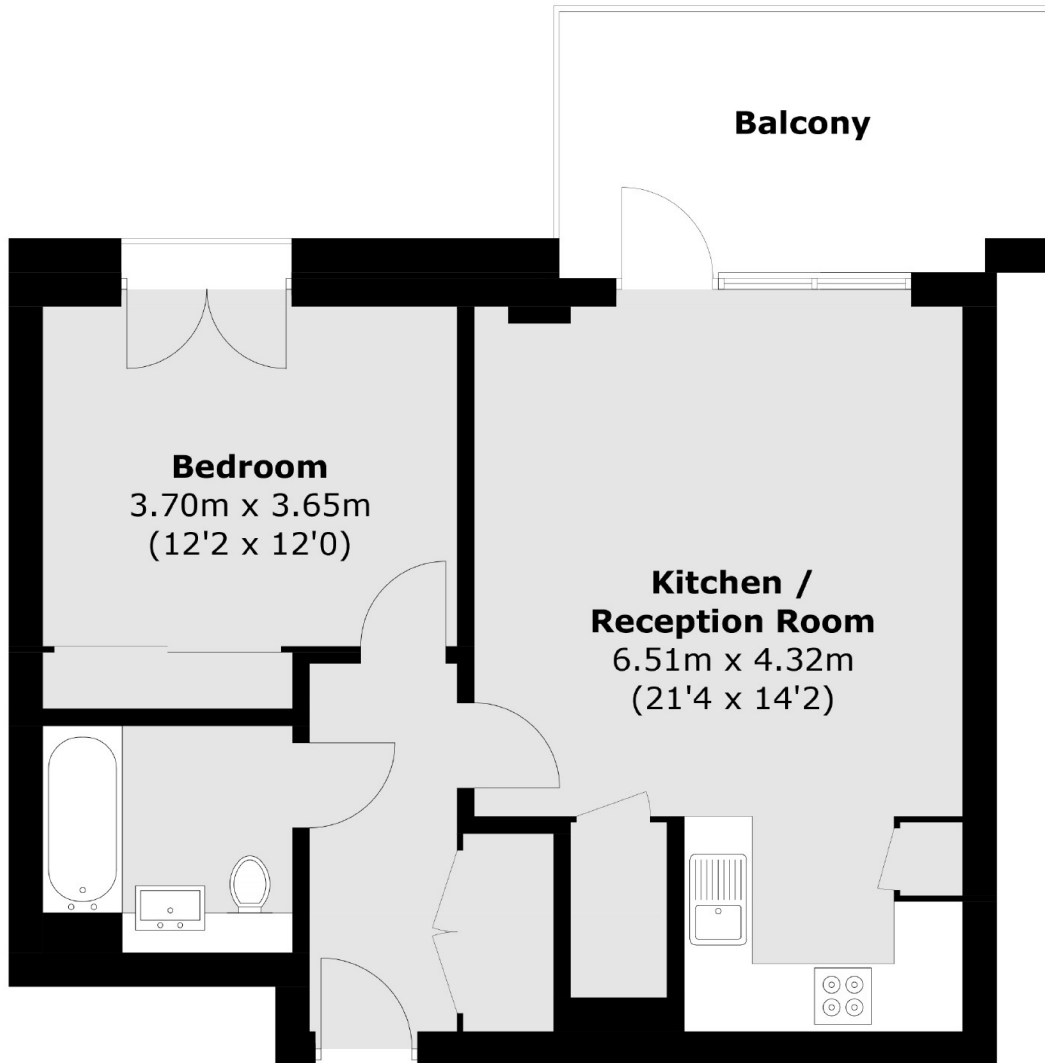
A superbly finished one double bedroom apartment with over 545 sq ft of living space. The property is situated on the third floor within a fantastic well-maintained development, benefitting from a spacious kitchen/reception/dining area, large private balcony and communal lift service.

Located on the doorstep of Lampton Park, this property is moments to Hounslow Central Station (Piccadilly line) with regular services to Heathrow Airport and Central London. Hounslow High Street is a short walk with a variety of shops and restaurants as well as a cinema

Features

- Bright And Spacious
- One Double Bedroom
- Separate Kitchen
- Large Balcony
- Long Lease
- Close To Transport

Clarke Avenue, Hounslow, TW3



Total area (approx.): 50.9 sq. m (547.9 sq. ft)
Balcony: 9.8 sq. m (105.5 sq. ft)

Dexters

Isleworth
568 London Road
Isleworth
TW7 4EP
Sales
020 8560 1177

Energy Rating: . We aim to make our particulars both accurate and reliable. However they are not guaranteed; nor do they form part of an offer or contract. If you require clarification on any points then please contact us, especially if you're traveling some distance to view. Please note that appliances and heating systems have not been tested and therefore no warranties can be given as to their good working order.

 **RICS** | Regulated
Estate Agent
and Letting Agent

dexters.co.uk