



Hounslow Gardens, TW3

£525,000

Offered to the market with no onward chain, we are delighted to bring to the market this delightful three bedroom family home. Benefits include generous room sizes, high ceilings and large private garden. There is further scope to extend (STPP)

Hounslow Gardens is superbly situated moments from Hounslow Mainline station and close to excellent local schools, parks and shops. Neighbouring areas of Twickenham, Richmond and St Margarets are nearby as well as easy access to A4/M4 to London and Heathrow.

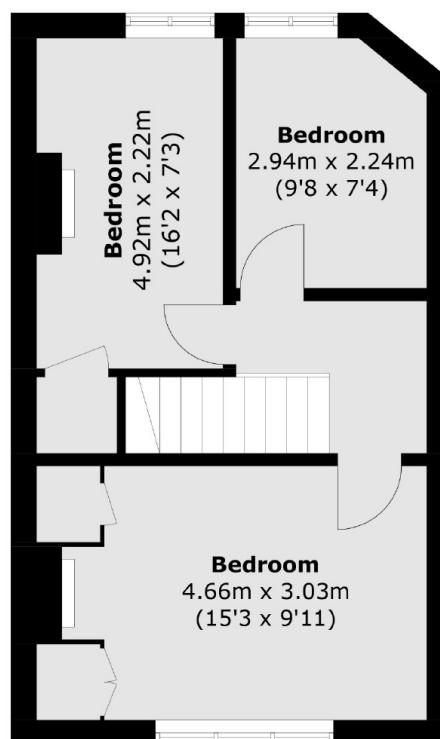
Features

- Three Bedroom House
- Freehold
- Scope to Extend (STPP)
- Large Private Garden
- Central Location
- No Chain

Hounslow Gardens, Hounslow, TW3



Ground Floor



First Floor

Total area (approx.): 79.7 sq. m (857.9 sq. ft)