



Rosebery Road, TW3

£549,950

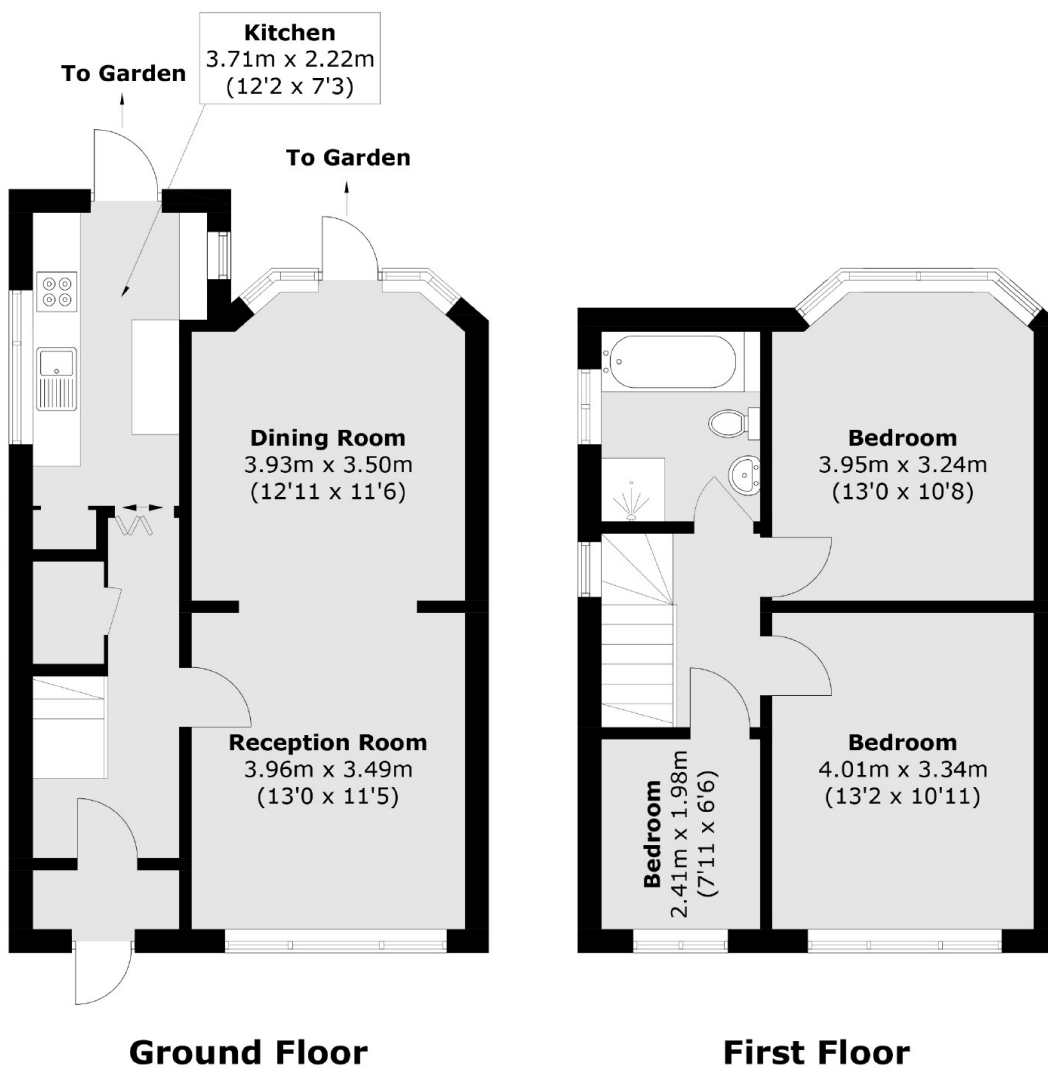
A superb three bedroom end of terrace house offered to the market. The property benefits from off street parking, double reception room and a large garden with spacious garage to the rear. There is further scope to extend (STPP) and modernise.

Rosebery Road is ideally located with local amenities including shops, parks and schools close by. There are also excellent transport links with easy access to neighbouring areas as well as Heathrow Airport and Central London.

Features

- End of Terrace Family Home
- Three Bedrooms
- Driveway
- Garage
- Large Private Garden
- Scope to Extend (STPP)

Rosebery Road, Hounslow, TW3



Total area (approx.): 88.3 sq. m (950.4 sq. ft)