



Frazer Nash Close, TW7

£475,000

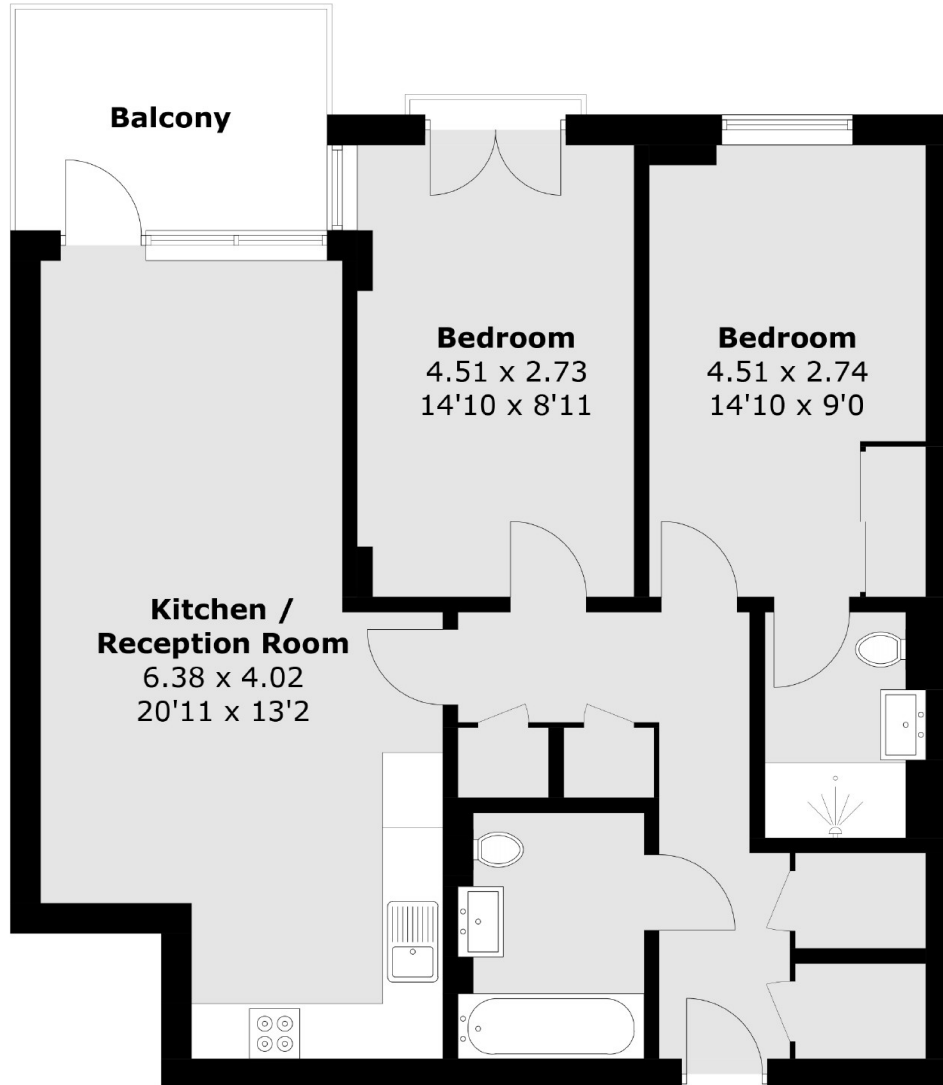
Situated in one of Isleworth's most popular and sought after developments, we are pleased to bring to the market this superb two double bedroom second floor apartment. The property further benefits from two bathrooms, lift access and a spacious open-plan living/dining area which leads onto a private balcony overlooking a quiet communal area for residents access only.

Primely situated moments from Isleworth station and close to local amenities, schools and parks. There is easy access to Chiswick, Richmond and Ealing, as well as the A4/M4 in and out of London.

Features

- Two Double Bedrooms
- Two Bathrooms
- Allocated Parking
- Second Floor
- Private Balcony
- Long Lease

Frazer Nash Close, Isleworth, TW7



Total area (approx.): 74.6 sq. m (803.0 sq. ft)
Balcony area (approx.): 6.8 sq. m (73.2 sq. ft)