



Amhurst Gardens, TW7

£725,000

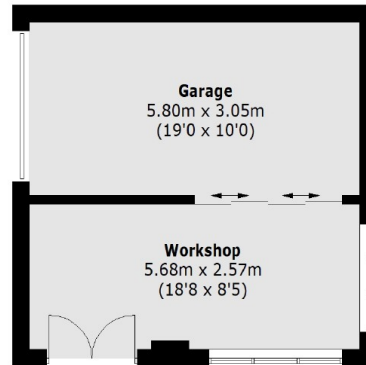
A bright and spacious family home presented in beautiful condition throughout. The property comprises of three bedrooms and loft room/fourth bedroom with further benefits including off street parking, an extended large kitchen/diner, utility room and two bathrooms. There is also a south facing garden with a superbly large garage/workshop to the rear.

Amhurst Gardens is conveniently situated close to amenities including excellent local schools, parks and West Middlesex hospital. The property is located a short walk to Isleworth train station as well as bus links to neighbouring areas.

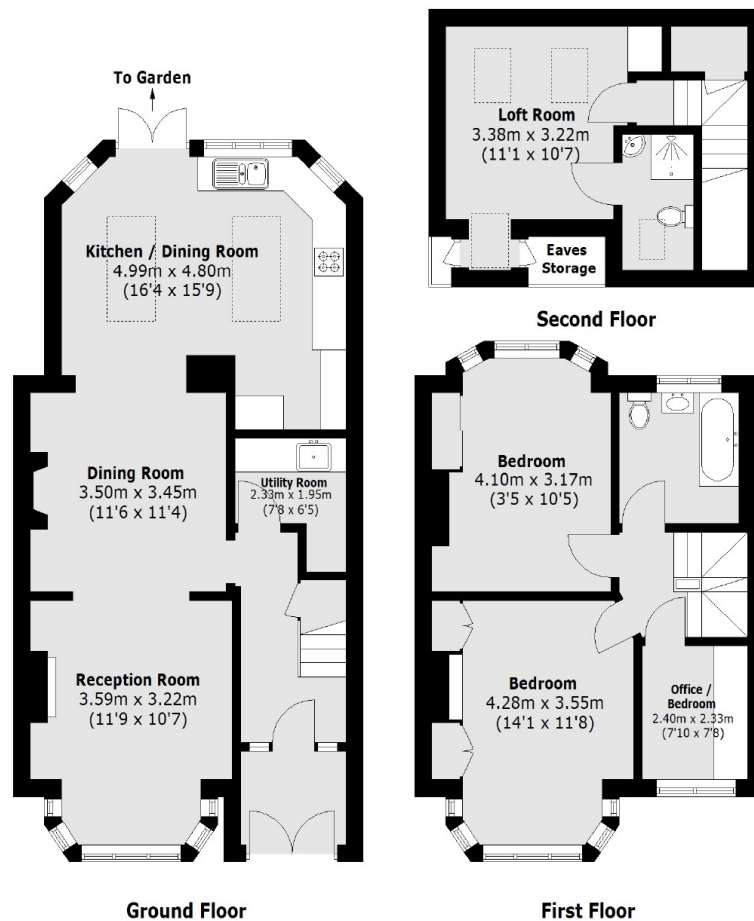
Features

- Three Bedrooms
- Loft Room
- Two Bathrooms
- Off Street Parking
- Large Garage
- South Facing Garden

Amhurst Gardens, Isleworth, TW7



Outbuilding
(Not Shown In Actual
Location / Orientation)



Total area (approx.): 125.5 sq. m (1,350.9 Sq. ft)
(Excluding Eaves)
Outbuilding : 33.6 sq. m (361.7 Sq. ft)