



Witham Road, TW7

£899,950

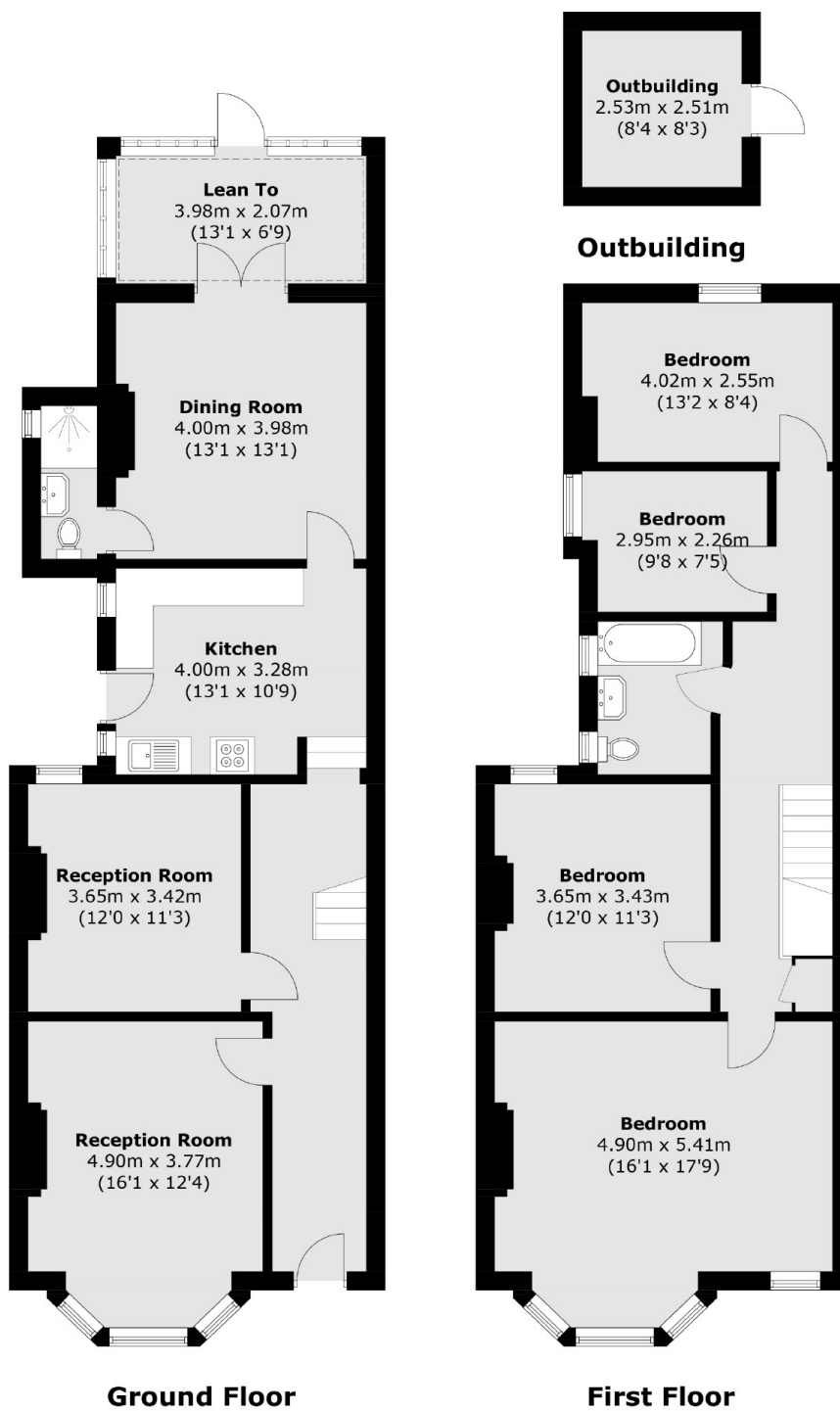
A superbly spacious period property offered to the market with no onward chain. The property comprises of four bedrooms, three reception rooms and two bathrooms. Benefits include period charm throughout, a large rear garden and ample potential to extend (STPP).

Situated on a highly sought after road close to both Osterley tube and Isleworth train stations, as well as being within close proximity to excellent local schools, parks and shops. There is easy access to neighbouring areas of Chiswick, Richmond and Twickenham.

Features

Semi Detached
Over 1700 Sq Ft
Four Bedrooms
Three Reception Rooms
Close To Station
No Onward Chain

Witham Road, Isleworth, TW7



Total area (approx.): 161.5 sq. m (1,738.3 sq. ft)
Outbuilding : 6.5 sq. m (70.0 sq. ft)