



Pickwick Close, TW4

£499,999

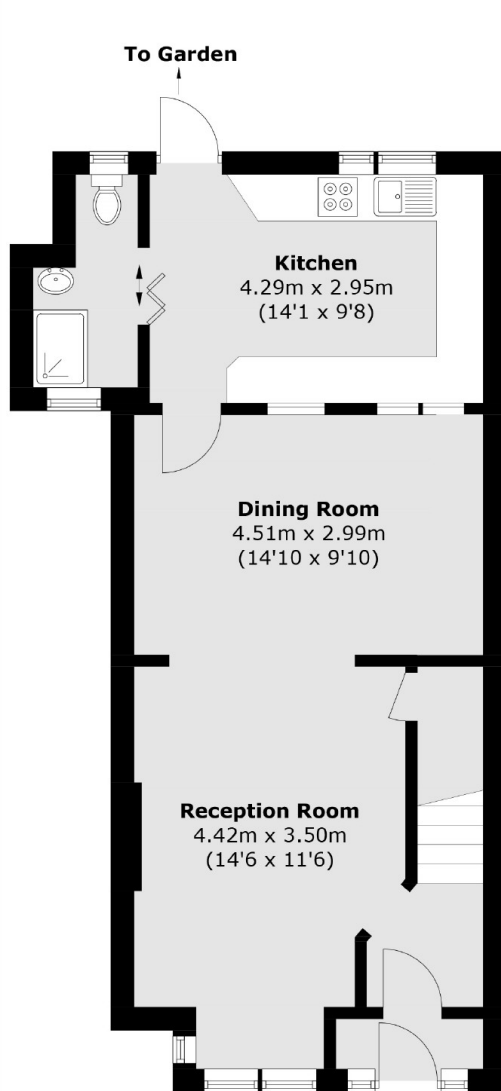
A superb three bedroom end of terrace family home, presented beautifully throughout. Benefits include off street parking, two reception rooms, extended kitchen, two bathrooms and a spacious outbuilding to the rear. The property is offered to the market with no onward chain.

Situated on a quiet and sought after residential road close to excellent schools, shops and parks. There are good transport links nearby with easy access to Heathrow Airport. Neighbouring areas of Whitton, Twickenham and Isleworth as well as a new Adventure theme park and Mini golf course are all within easy reach.

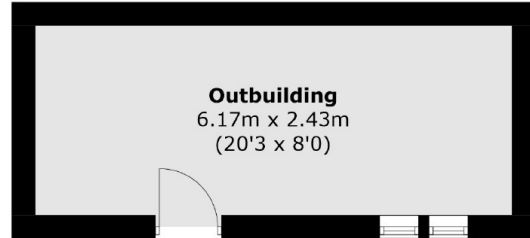
Features

End Of Terrace
Three Bedrooms
Two Bathrooms
Off Street Parking
Large Outbuilding
No Onward Chain

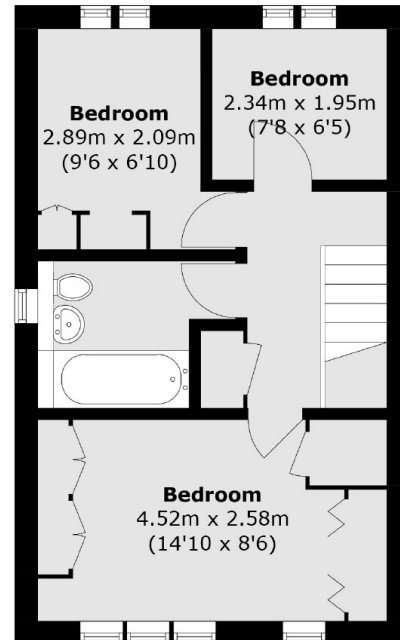
Pickwick Close, Hounslow, TW4



Ground Floor



**(Not Shown In Actual
Location / Orientation)**



First Floor

Total area (approx.): 88.9 sq. m (956.9 sq. ft)
Outbuilding area (approx.): 15.2 sq. m (163.6 sq. ft)