



Marbaix Gardens, TW7

£925,000

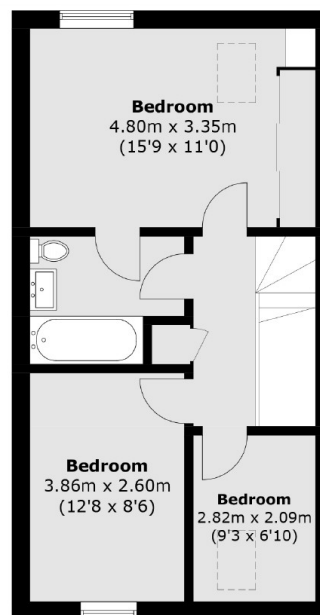
A rare opportunity to acquire an exceptionally townhouse in the exclusive Marbaix Gardens development. The property comprises of four/five bedrooms, reception room including large open plan kitchen living with bi-fold doors leading to the garden, two bathrooms plus ground floor W/C and ample storage. Further benefits include master bedroom with private balcony, large garage with driveway and secluded private garden.

Marbaix Gardens is superbly situated close to Osterley underground station (Piccadilly line), Osterley Park and local amenities. There is easy access to the A4/M4 in and out of London as well as neighbouring areas of Ealing, Chiswick and Richmond.

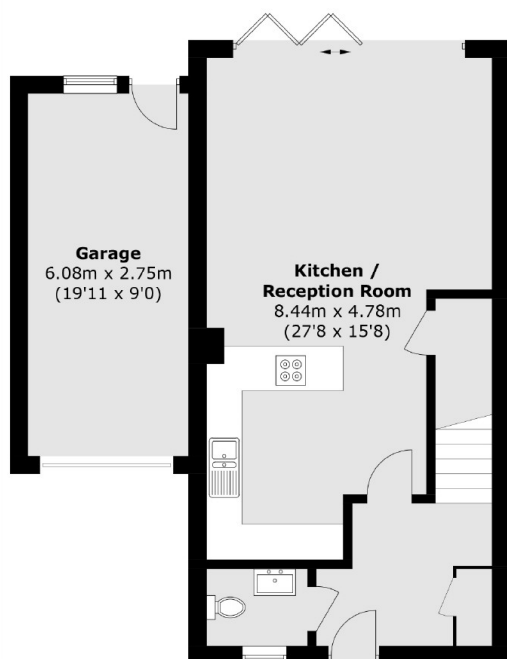
Features

Gated Development
Townhouse
Four/Five Bedrooms
Large Garage & Driveway
Master Bedroom With Balcony
Close To Transport

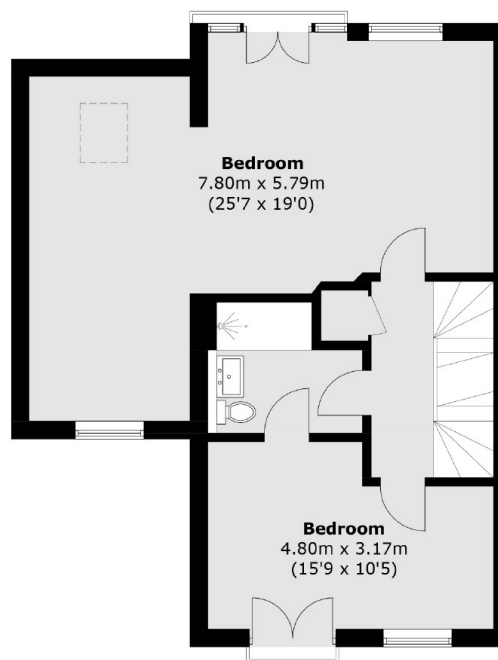
Marbaix Gardens, Isleworth, TW7



Second Floor



Ground Floor



First Floor

Total area (approx.): 160.0 sq. m (1,722.2 sq. ft)
Garage : 16.6 sq. m (178.7 sq. ft)