



## St. Heliers Avenue, TW3

### £499,950

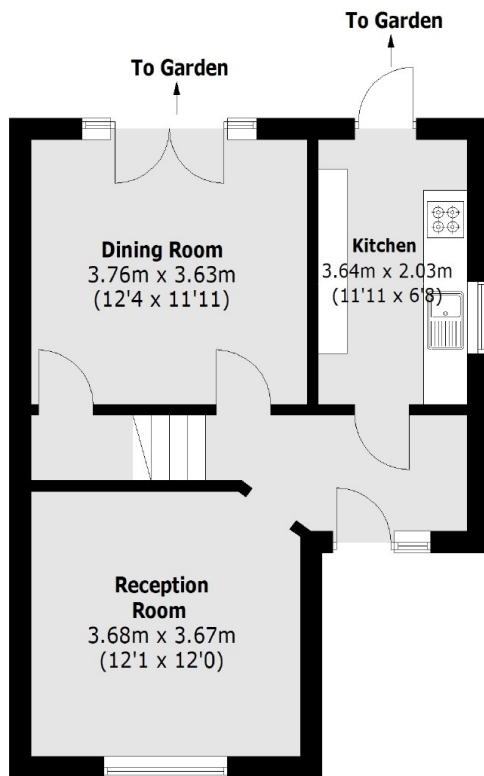
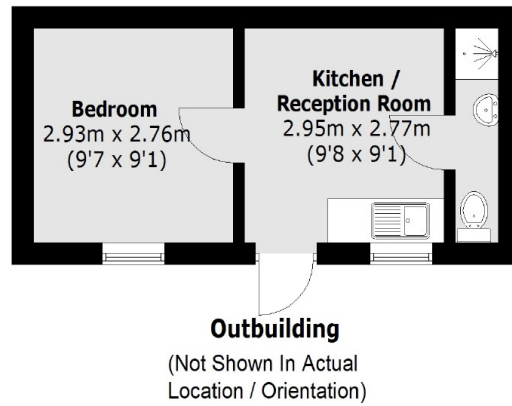
A characterful three bedroom semi detached family home the property benefits from of street parking, a large annex which includes a kitchen and bathroom, two spacious reception rooms and potential to extend (STPP).

Situated close to excellent local schools and in walking distance from Hounslow High Street and Hounslow railway station which offers regular services to London Waterloo. Neighbouring areas of Whitton, Twickenham and Richmond are also within easy reach.

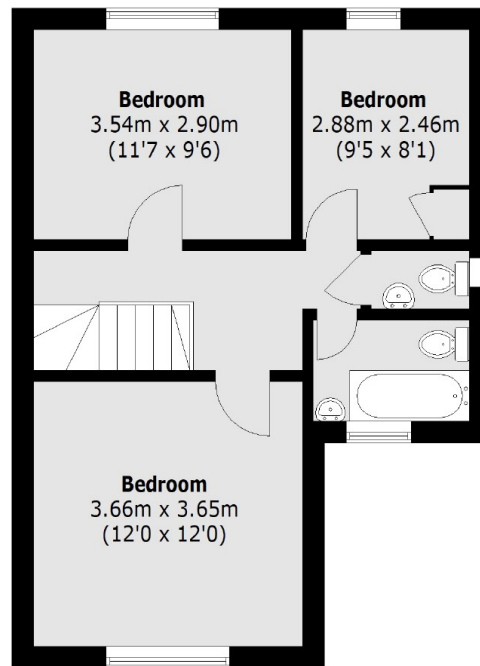
### Features

- Semi Detached
- Three Bedrooms Plus Annex
- Self-Contained Outbuilding
- Off Street Parking
- Potential to Modernise/Update
- No Onward Chain

# St. Heliers Avenue, Hounslow, TW3



**Ground Floor**



**First Floor**

Total area (approx.): 88.3 sq. m (950.4 Sq. ft)  
Outbuilding: 19.0 sq. m (204.5 Sq. ft)