



Durham Avenue, TW5

£625,000

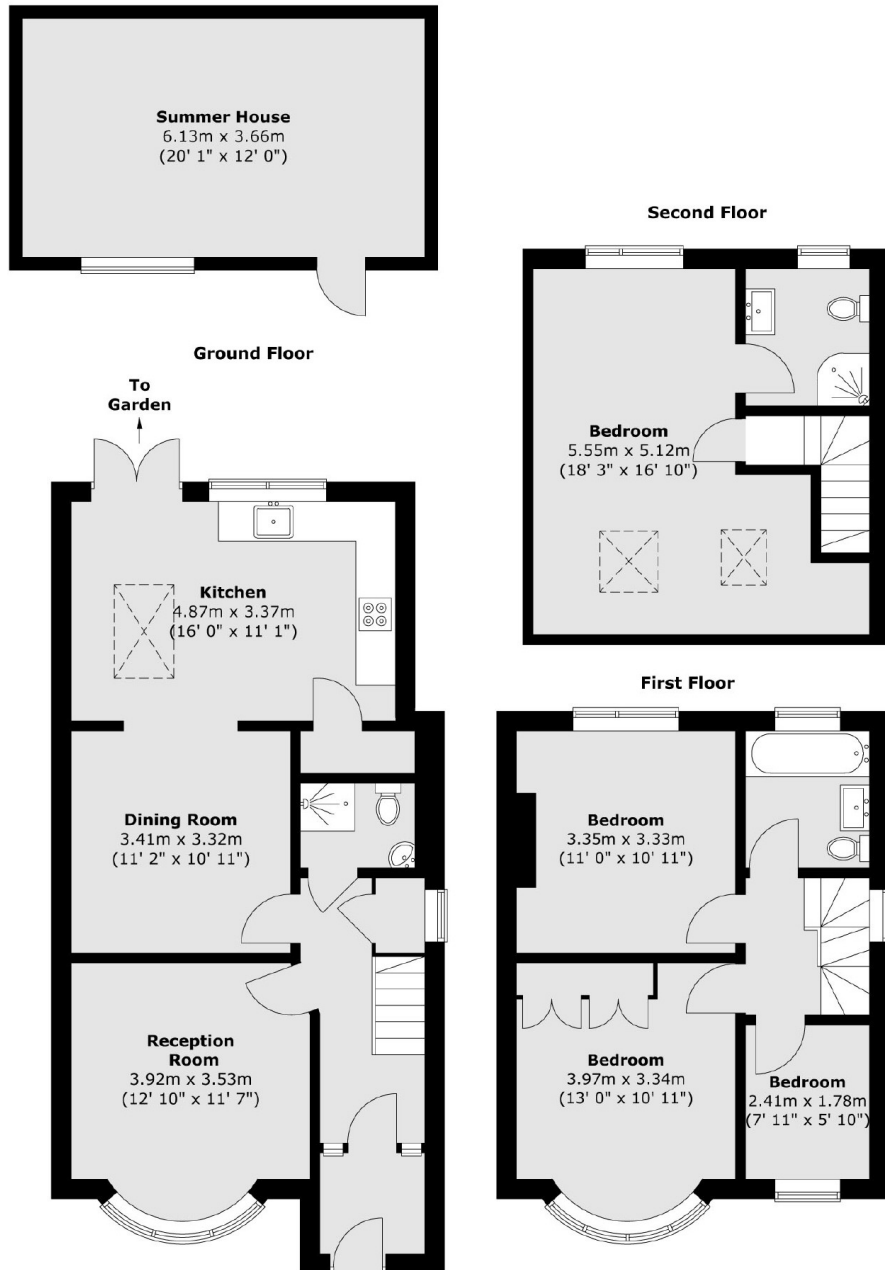
A superbly spacious four bedroom semi-detached family home situated on a residential cul-de-sac. The property benefits from three bathrooms, off-street parking for four cars and a rear outbuilding with fitted electrics.

The property is conveniently situated close to excellent local schools, amenities and transport links. Osterley tube station (Piccadilly line) is nearby with regular services to Central London and Heathrow Airport. There is also easy access to the A4/M4 in and out of London.

Features

- Semi Detached
- Four Bedrooms
- Three Bathrooms
- South Facing Garden
- Off Street Parking
- Rear Outbuilding

Durham Avenue, Hounslow, TW5



Total area (approx.) : 124.5 sq. m (1340 sq. ft)
Total summer house (approx.) : 22.4 sq. m (241 sq. ft)