



## Academy Place, TW7

£359,995

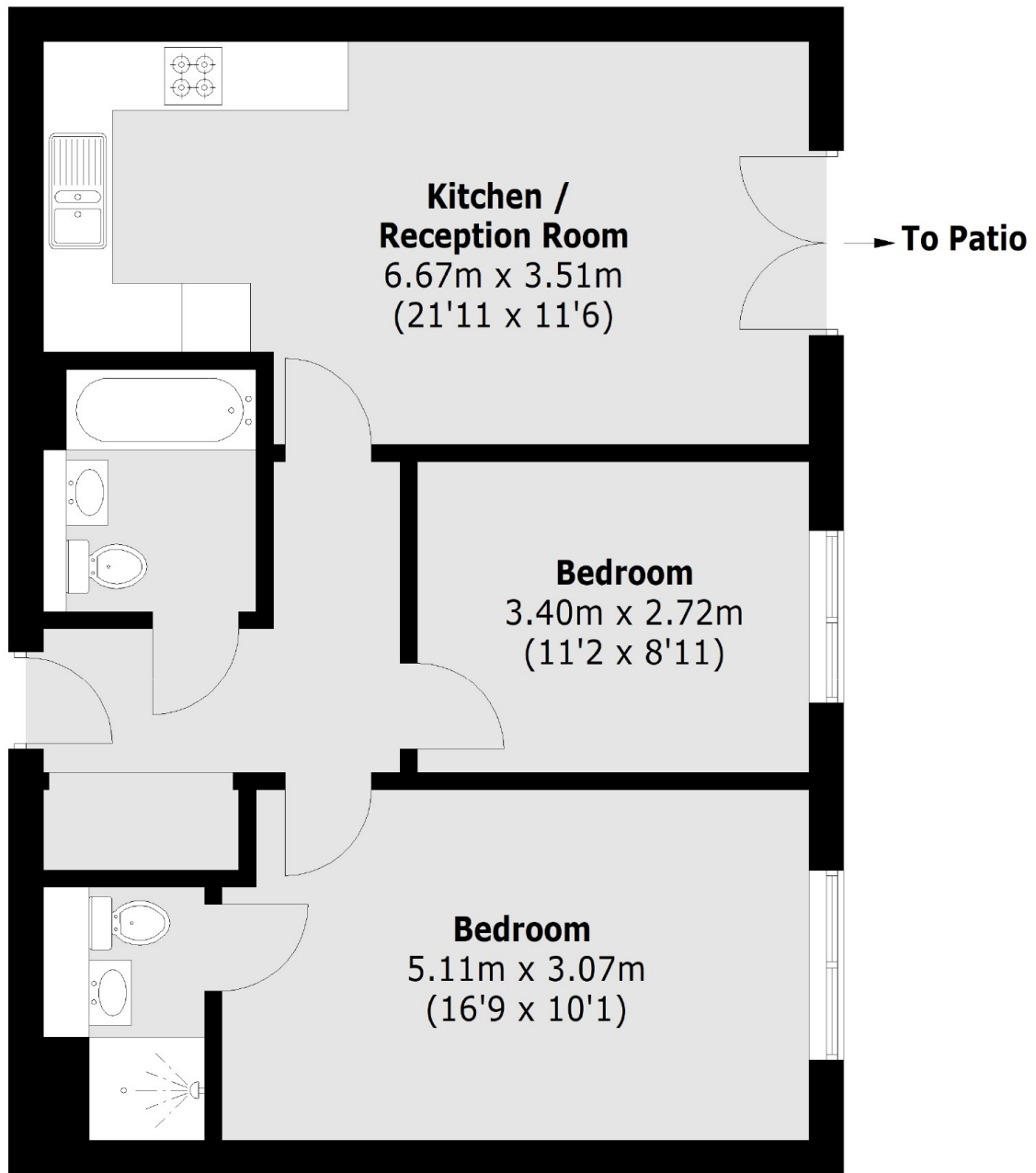
We are delighted to bring to the market this immaculately presented two bedroom, two bathroom ground floor apartment. Further benefits include a private garden overlooking beautiful communal gardens, an allocated parking space and long lease.

Academy Place is a private gated development, with great links to Central London via car, tube and train. Isleworth and Syon Lane Train stations are a short walk away.

### Features

- Ground Floor
- Two Bedrooms
- Two Bathrooms
- Allocated Parking
- Private Garden
- Stunning Communal Grounds

Academy Place,  
Isleworth, TW7



Total area (approx.): 63.9 sq. m (687.8 Sq. ft)