



Campion Road, TW7

£739,950

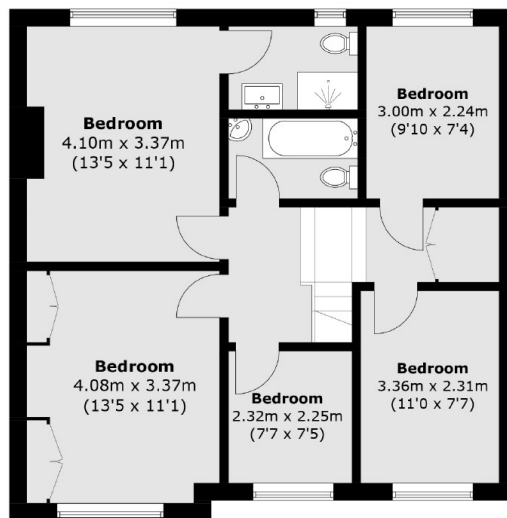
A bright and spacious semi detached property in a popular and sought after residential area. The property comprises of six bedrooms, two reception rooms, kitchen/dining room as well as a garden room. Additional benefits include off street parking, a large south west facing garden and no onward chain.

Superbly situated close to excellent local schools, parks and amenities. Both Syon Lane Train Station and Osterley Tube Station are nearby providing fantastic transport links.

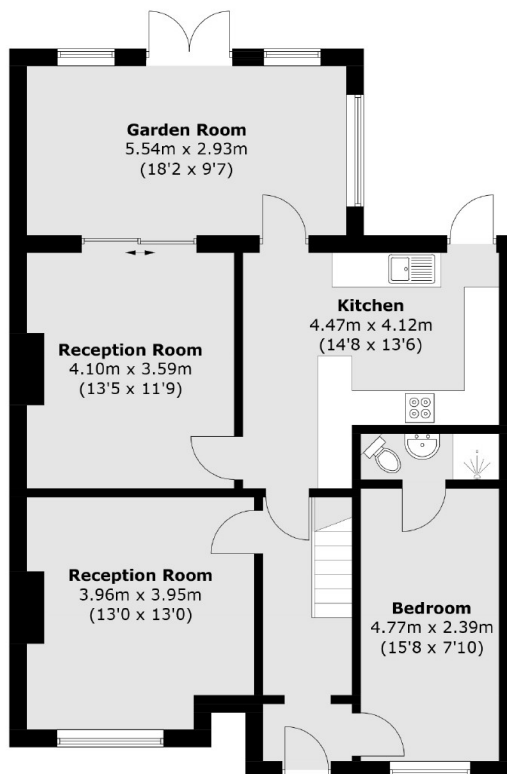
Features

- Semi Detached
- Six Bedrooms
- Three Bathrooms
- South West Facing Garden
- Off Street Parking
- No Onward Chain

Campion Road, Isleworth, TW7



First Floor



Ground Floor

Total area (approx.): 154.3 sq. m (1,660.8 sq. ft)