



London Road, TW7

£299,950

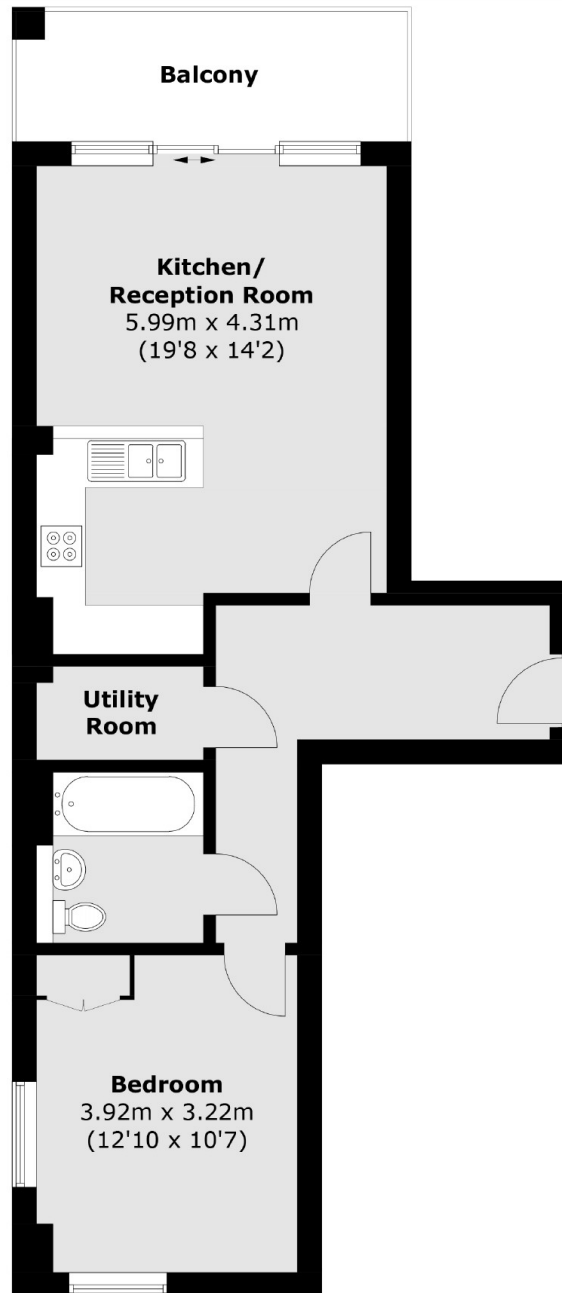
Offered to the market with no onward chain. A truly wonderful and luxurious one bedroom apartment located on the top floor of a popular development. The property has a balcony with breathtaking views over looking Twickenham Stadium and Central London.

Silchester apartments is located on London Road and has great road links to and from Central London. The Piccadilly Line is close by in addition to an array of shops and local amenities.

Features

- Luxury Penthouse
- One Double Bedroom
- Large Private Balcony
- Lift Access
- Central Location
- No Chain

London Road, Isleworth, TW7



Seventh Floor

Total area (approx.): 54.9 sq. m (590.9. sq. ft)
Balcony area (approx.): 7.6 sq. m (81.8 sq. ft)