



Avondale Gardens, TW4

£300,000

*** OFFERS IN EXCESS OF *** A spacious two double bedroom apartment situated on the first floor of this well presented purpose built development. The property benefits from allocated parking, ample storage and no onward chain. Ideal for first time buyers and investors alike.

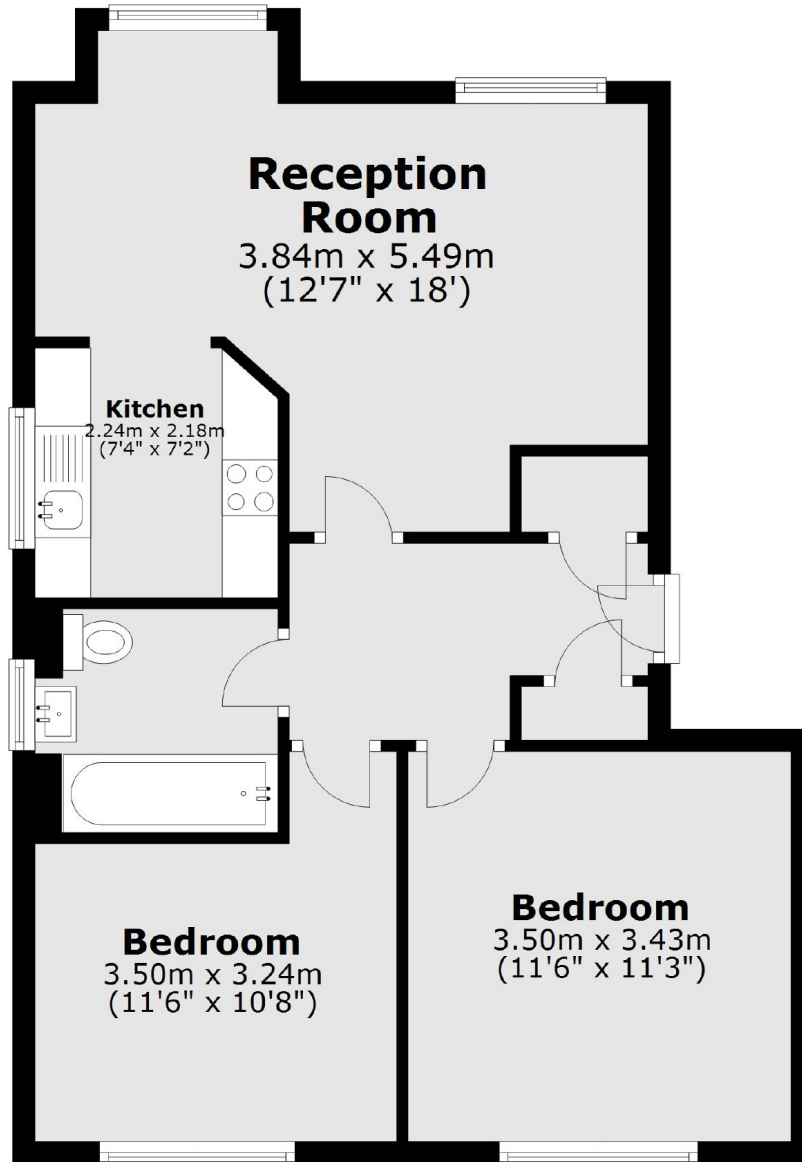
Avondale Gardens is conveniently located close to Heathlands School (Ofstead rating Outstanding), local amenities and parks. There are nearby train and tube stations offering excellent transport links.

Features

- Purpose Built
- First Floor
- Two Double Bedroom
- Ample Storage
- Allocated Parking
- No Onward Chain

Avondale Gardens, Hounslow, TW4

Ground Floor



Total area: approx. 56.6 sq. metres (609.7 sq. feet)