



## St. Stephens Road, TW3

£899,950

A beautiful double fronted semi detached Victorian family home situated on one of Hounslow's premier tree lined roads. The property comes with five double bedrooms, two bathrooms, two reception rooms, and a large private garden and is offered to the market with no onward chain.

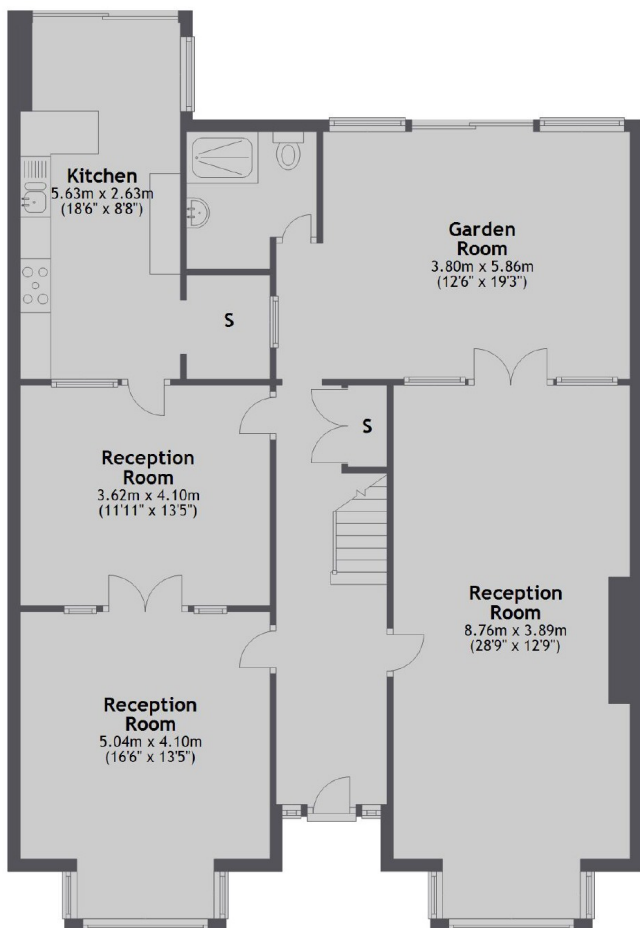
St Stephen's Road is just off Station Road and is only 1 mile from Whitton Mainline Station and just over 1 mile from Hounslow Central Tube Station (Piccadilly Line).

### Features

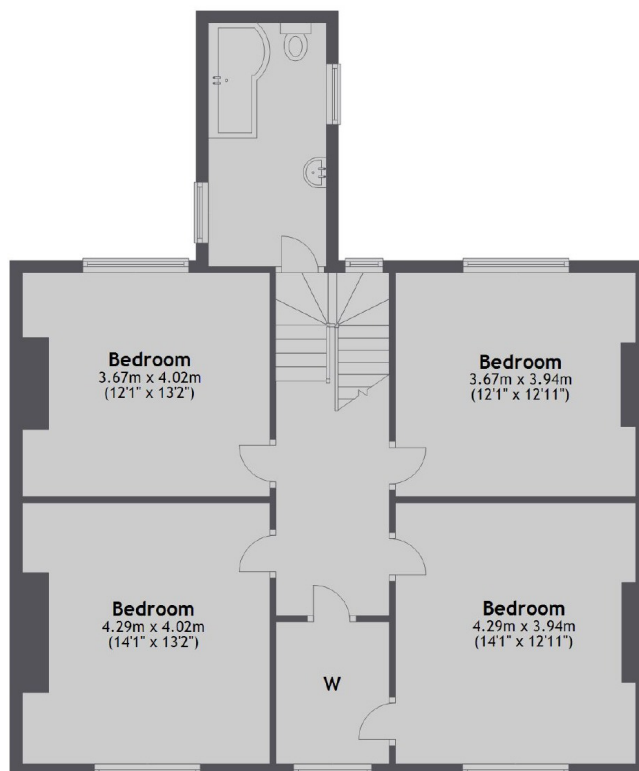
- Semi Detached
- Five Bedrooms
- Over 2300 Sq Ft
- Large Private Garden
- Off Street Parking
- No Onward Chain

# St. Stephens Road, Hounslow, TW3

Ground Floor



First Floor



Total area: approx. 215.8 sq. metres (2322.8 sq. feet)