



Temple Road, TW3

£645,000

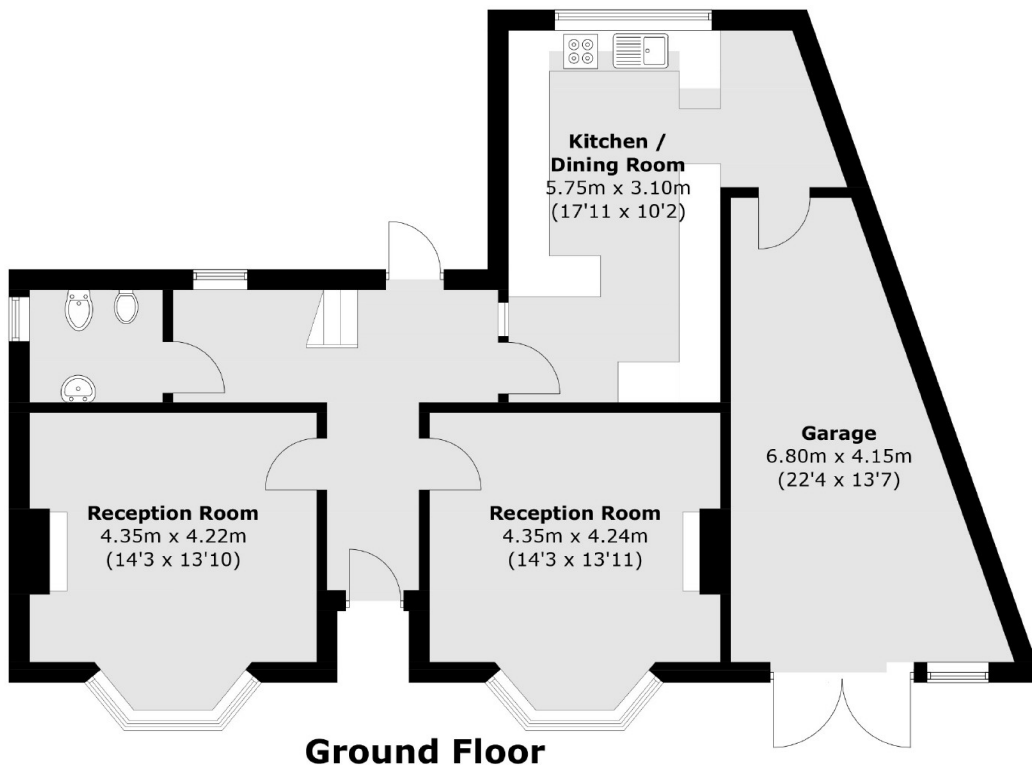
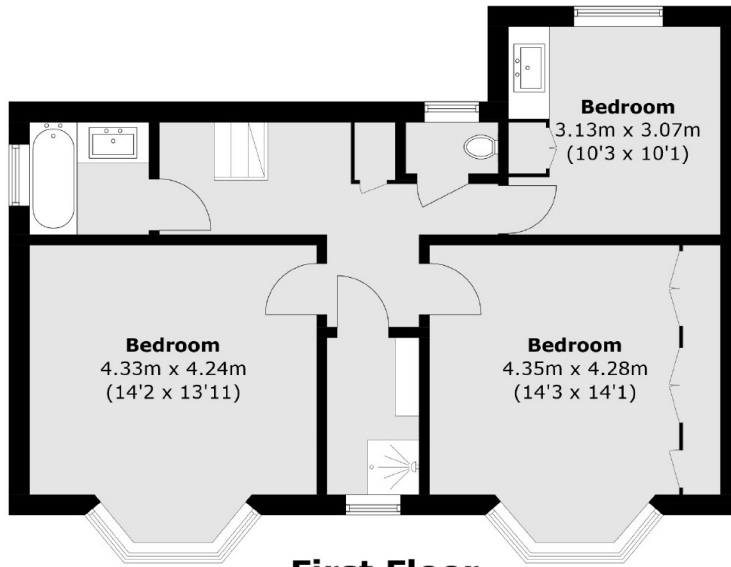
An impressive double fronted detached property offered to the market in a quiet residential road. The property benefits from two receptions, two bathrooms, two garages and a private rear garden. The property is need of modernisation and ideal for those looking for a unique property to refurbish. Offered to the market with no onward chain.

Ideally situated close to Hounslow East station (Piccadilly line) and moments from Hounslow High Street hosting an array of shops and restaurants. There is also easy access to neighbouring areas of Isleworth, Whitton and Twickenham.

Features

- Detached
- Over 1600 Sq Ft
- Three Bedrooms
- Two Garages
- Potential to Extend STPP
- Close To Transport

Temple Road, Hounslow, TW3



Total area (approx.): 154.6 sq. m (1663.9 sq. ft) (Including Garage)