



London Road, TW7

£424,950

A superbly spacious two double bedroom, two bathroom apartment situated on the seventh floor within this popular and sought after development. Further benefits include private balcony, communal roof terrace, allocated parking and a long lease. Offered to the market with no onward chain.

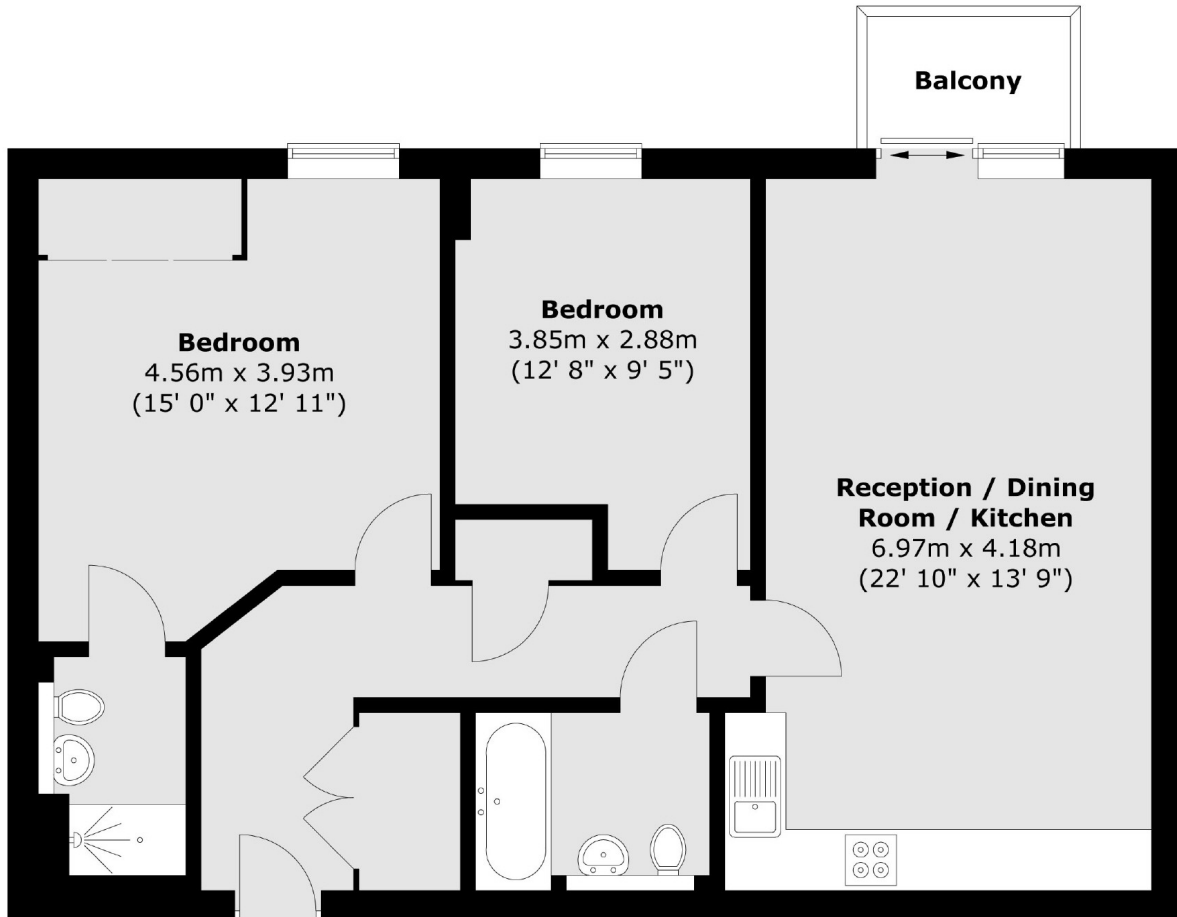
Situated close to excellent shops, schools and parks. Both Hounslow East (Piccadilly line) and Isleworth (Mainline) stations are nearby with excellent transport links. There is easy access to neighbouring areas of Richmond, Twickenham and Kew.

Features

- Two Double Bedrooms
- Two Bathrooms
- Allocated Parking
- Lift Service
- Private Balcony
- Close To Amenities

London Road, Isleworth, TW7

Seventh Floor



Total area (approx.) : 77 sq. m (829 sq. ft)
Total balcony area (approx.) : 2.6 sq. m (28 sq. ft)