

SNELLERS

ESTATE AGENTS



Chestnut Avenue, TW12

£1,855,000

A beautiful double fronted Victorian style villa located in one of Hampton's premier residential roads in the heart of the village. This sizeable villa will make an ideal family home with ample space and a private south west facing garden.



On the ground floor there are two reception rooms, a good size kitchen/ breakfast room and a comfortable study. Also to the rear and across the full width of the house is the beautiful garden room.

On the first floor are three double bedrooms. The principle bedroom has a walk in wardrobe and en suite bathroom. The other two double bedrooms share the family bathroom. The utility room is also conveniently located on this floor. The top floor is home to three further bedrooms and a bathroom.

Outside to the front of the house is a driveway providing off street parking for up to three cars and side access. The rear garden is south west facing, landscaped with two seating areas, a large shed and ample space for the family to enjoy and the grown ups to relax.

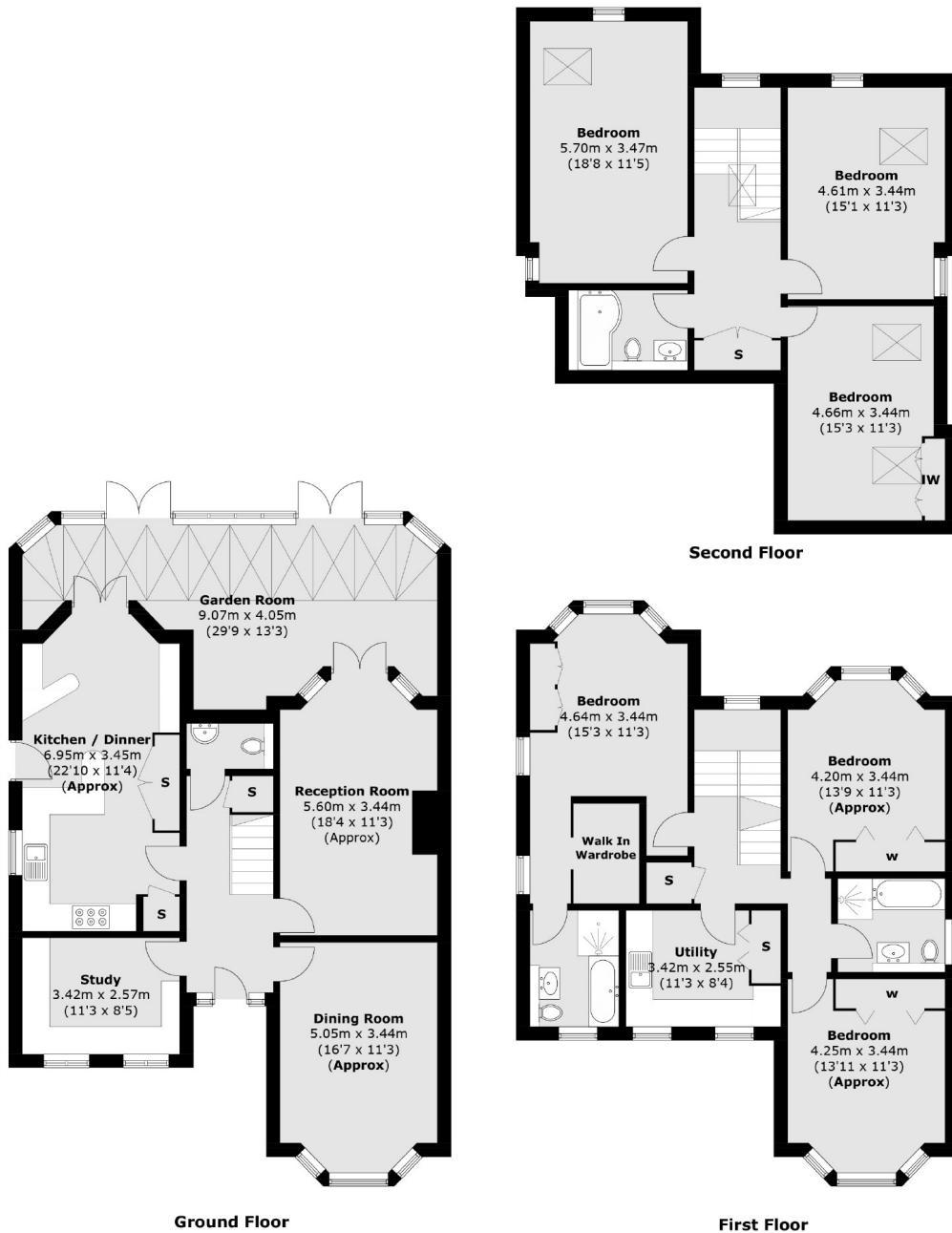
The property is ideal for families and with over 2,800 sq.ft of accommodation there is no shortage of space. If you are looking for a spacious family home in the heart of Hampton Village then you will find it hard to find a better choice.

- Detached • Six Bedrooms • Three Reception Rooms •
- Downstairs W.C • Off Street Parking • South West Garden •



SNELLERS

ESTATE AGENTS



Total area (approx.): 261.5 sq. m (2,814.7 sq. ft)

Snellers Hampton Hill Sales
197-201 High Street
Hampton Hill
TW12 1NL
020 8783 0083
hamptonsales@snellers.co.uk

Energy Rating: C We aim to make our particulars both accurate and reliable. However they are not guaranteed; nor do they form part of an offer or contract. If you require clarification on any points then please contact us, especially if you're traveling some distance to view. Please note that appliances and heating systems have not been tested and therefore no warranties can be given as to their good working order