

SNELLERS

ESTATE AGENTS



Oatlands Drive, KT13

£2,500 PCM

Set in a beautiful development on Oatlands Drive is this bright and spacious two bedroom penthouse apartment spread over 1000 sq ft. Recently refurbished to a high standard throughout the property has allocated parking, communal gardens and a lift service.

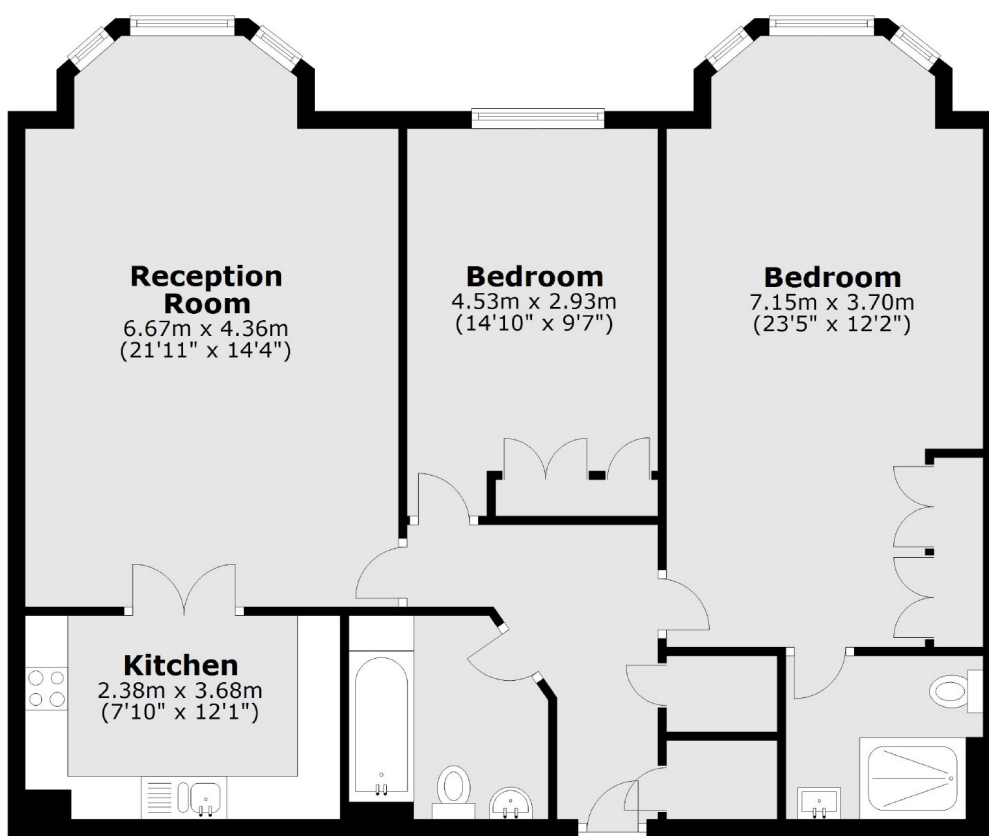


Oatlands Drive is a premier road in Weybridge with easy access to Weybridge High Street with its array of boutique shops, bars and coffee shops. It is also in close proximity to the Hart shopping and the River Thames.

- Gated Development • Allocated Parking • Two Bathrooms •
- Excellent Condition • Over 1000 Square ft • Lift Service •



Second Floor



Total area: approx. 95.4 sq. metres (1026.6 sq. feet)

Snellers Hampton Hill Lettings
197-201 High Street
Hampton Hill
TW12 1NL
020 8783 3633
hamptonlettings@snellers.co.uk

Energy Rating: D We aim to make our particulars both accurate and reliable. However they are not guaranteed; nor do they form part of an offer or contract. If you require clarification on any points then please contact us, especially if you're traveling some distance to view. Please note that appliances and heating systems have not been tested and therefore no warranties can be given as to their good working order