



Queens Reach, KT8

£2,195 PCM

This beautifully presented ground floor apartment has a bright and spacious reception room with direct access to a private patio area, as well as two large double bedrooms, an eat in kitchen and an allocated parking space.



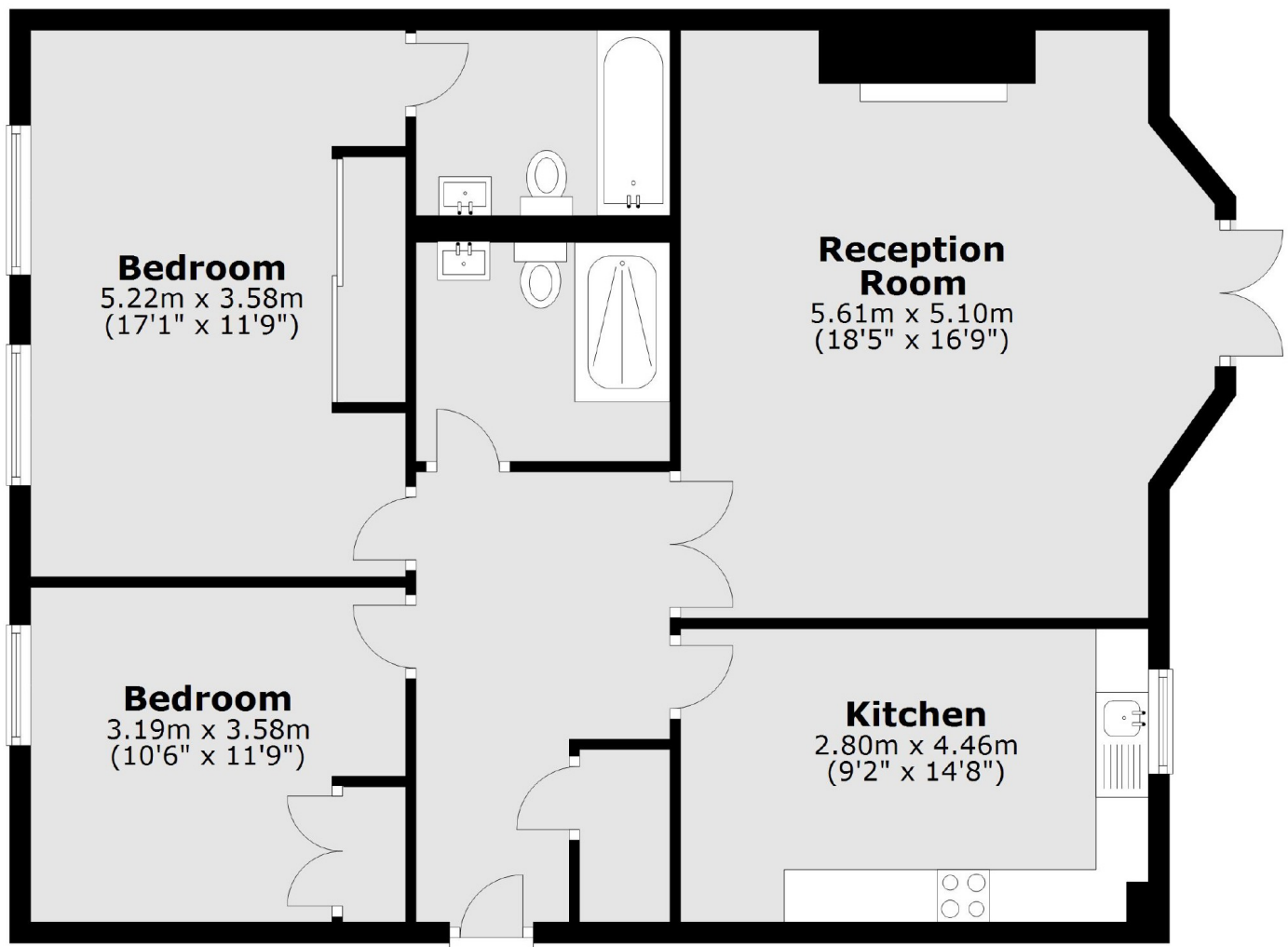
This beautifully presented ground floor apartment has a bright and spacious reception room with direct access to a private patio area, as well as two large double bedrooms, an eat in kitchen and an allocated parking space.

Set within a sought after gated development, moments from the River Thames and close to Hampton Court Palace and station.

- Spacious Apartment • Allocated Parking • Two Double Bedrooms •
- Two Bathrooms • Gated Development • Communal Gardens •



Ground Floor



Total area: approx. 91.9 sq. metres (989.6 sq. feet)

Snellers Hampton Hill Lettings
197-201 High Street
Hampton Hill
TW12 1NL
020 8783 3633
hamptonlettings@snellers.co.uk

Energy Rating: We aim to make our particulars both accurate and reliable. However they are not guaranteed; nor do they form part of an offer or contract. If you require clarification on any points then please contact us, especially if you're traveling some distance to view. Please note that appliances and heating systems have not been tested and therefore no warranties can be given as to their good working order