



Bloxham Crescent, TW12

£2,150 PCM

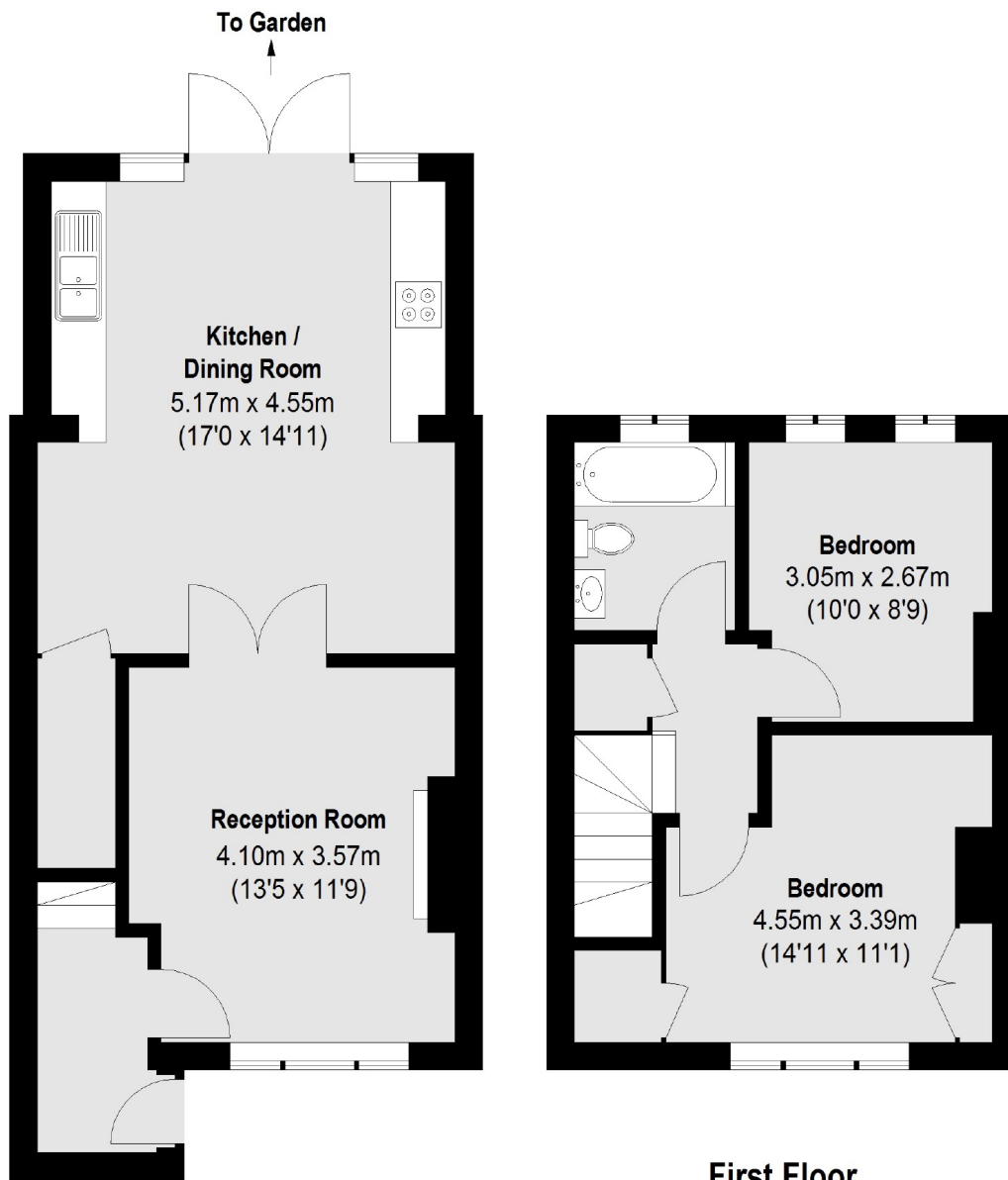
Presented in an excellent condition throughout, this delightful two bedroom house with good storage inside and outside is located close to a large range of amenities and offers a fantastic eat-in kitchen with pantry, leading out to a lovely private garden.

Situated a short walk to Hampton station offering fast links in to London and easily accessible to a large selection of shops and restaurants in nearby Hampton, Sunbury and Kingston. Bushy Park and the River Thames are also located close by.

- Reception with open fireplace • Modern kitchen with pantry • Area for home office •
- Good storage inside and out • Secure garden, patio and deck • Free on street parking •

SNELLERS

ESTATE AGENTS



Ground Floor

First Floor

Total area (approx.): 73.95 sq. m (796 sq. ft)

Snellers Hampton Hill Lettings
197-201 High Street
Hampton Hill
TW12 1NL
020 8783 3633
hamptonlettings@snellers.co.uk

Energy Rating: We aim to make our particulars both accurate and reliable. However they are not guaranteed; nor do they form part of an offer or contract. If you require clarification on any points then please contact us, especially if you're traveling some distance to view. Please note that appliances and heating systems have not been tested and therefore no warranties can be given as to their good working order