

SNELLERS

ESTATE AGENTS



High Street, TW12

£750,000

A special three bedroom property arranged over three floors and finished to a very high specification, opposite Bushy Park with incredible views into the park from two of the bedrooms. Beautiful original features above the entrance signify where the building was served as a drill hall in World War 1. Internally stunning and modern, this blend of period charm and exclusive contemporary living is a unique opportunity to purchase in a prime location.



Forming part of a high end development this is one of two unique properties providing a gated entrance leading through to allocated parking.

The ground floor has beautiful high ceilings, quality flooring and a contemporary open plan layout with kitchen, dining and living areas in one dual aspect space but the focal point is the beautiful state of the art modern gas fireplace.

On the first floor are two large double bedrooms with bespoke fitted wardrobes and a modern family bathroom, with the master suite and en-suite bathroom located on the second floor with views of Bushy Park.

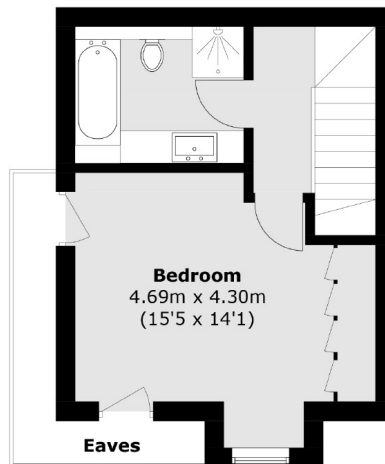
The Coach House is located on Hampton Hill High Street, opposite Royal Bushy Park and just over 100 yards from the main gates into the park.

- Beautiful Condition • Three Bedrooms • Two Bathrooms •
- Superb Views • Private Gated Parking • Prime Location •

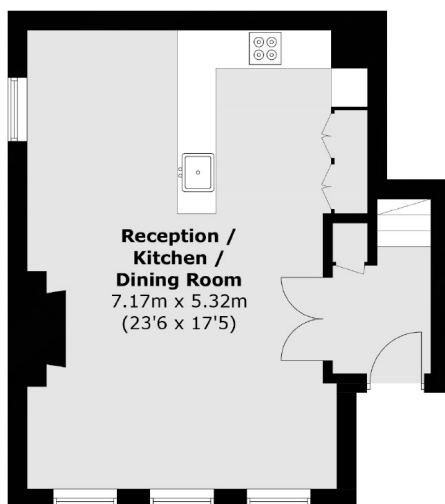


SNELLERS

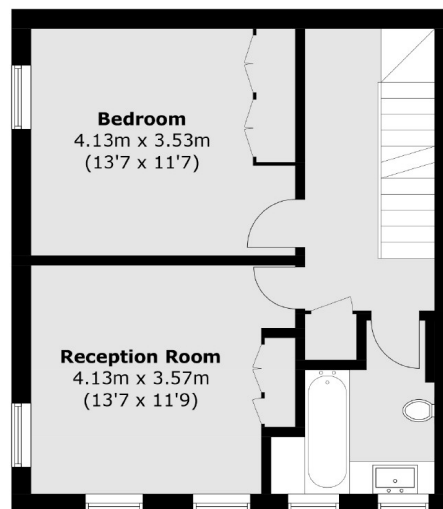
ESTATE AGENTS



Second Floor



Ground Floor



First Floor

Total area (approx.): 114.6 sq. m (1,233.5 sq. ft)
(Excluding Eaves)

Snellers Hampton Hill Sales
197-201 High Street
Hampton Hill
TW12 1NL
020 8783 0083
hamptonsales@snellers.co.uk

Energy Rating: We aim to make our particulars both accurate and reliable. However they are not guaranteed; nor do they form part of an offer or contract. If you require clarification on any points then please contact us, especially if you're traveling some distance to view. Please note that appliances and heating systems have not been tested and therefore no warranties can be given as to their good working order