

SNELLERS

ESTATE AGENTS



High Street, TW12

£440,000

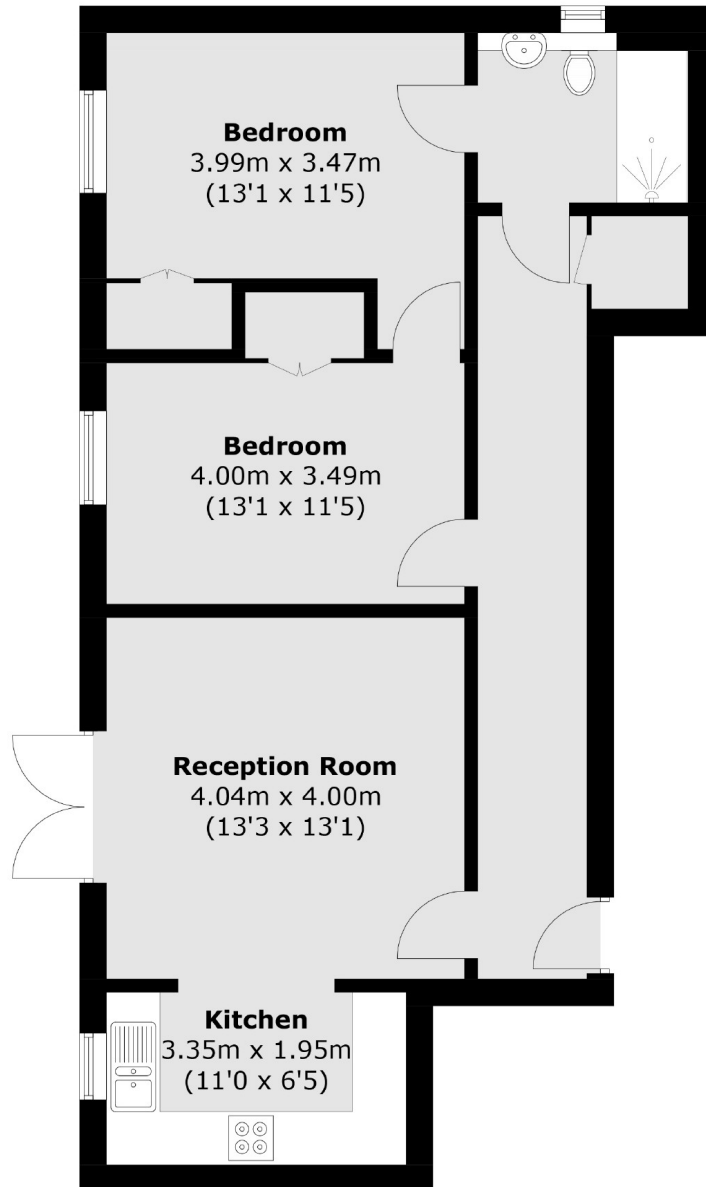
A beautifully presented ground floor two double bedroom purpose built apartment set within a popular over 55's residential development offering impressive accommodation and direct access to a private patio. The property benefits from on site management, landscaped communal gardens, a long 982 year leasehold interest and is offered to the market with no onward chain.



Templeton Court, High Street is ideally located for Hampton Hill Theatre and an array of highly desirable boutique shops, coffee shops and popular bars and restaurants. Both Fulwell train station and the Royal Bushy Park are close by.

- Ground Floor • Two Double Bedrooms • Private Patio •
- Over 55 Years Old • Residents' Landscaped Garden • No Chain •





Total area (approx.): 67.6 sq. m (727.6 sq. ft)

Snellers Hampton Hill Sales
197-201 High Street
Hampton Hill
TW12 1NL
020 8783 0083
hamptonsales@snellers.co.uk

Energy Rating: We aim to make our particulars both accurate and reliable. However they are not guaranteed; nor do they form part of an offer or contract. If you require clarification on any points then please contact us, especially if you're traveling some distance to view. Please note that appliances and heating systems have not been tested and therefore no warranties can be given as to their good working order