

SNELLERS

ESTATE AGENTS



Pemberton Road, KT8

£985,000

A charming and characterful, four/five bedroom Victorian family home offered to the market with no onward chain enviably located on a popular residential road in East Molesey.



Arranged over three floors and tastefully decorated throughout the accommodation offers a welcoming entrance hallway, a large bay fronted through reception room with solid wood flooring, a kitchen and an additional room/storage area with a door leading to a large private garden.

On the first floor there is the principle bedroom with solid wood flooring and a feature fireplace, a second double bedroom, a modern four piece family bathroom and a further bedroom. The loft has been cleverly extended to incorporate a large multi-purpose room, a contemporary shower room and a bedroom.

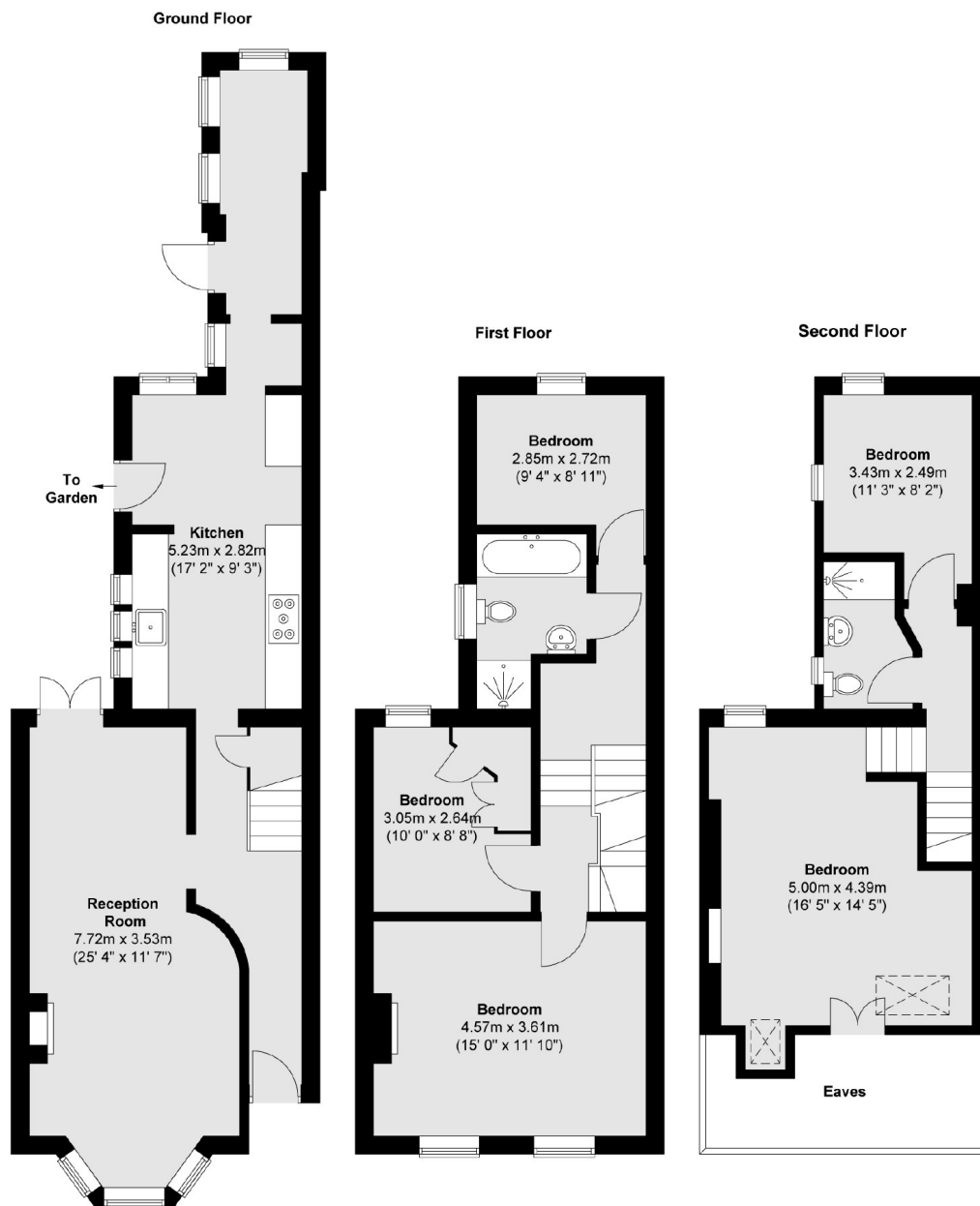
Pemberton Road is conveniently located near to local amenities, Hampton Court railway station, the River Thames, the historic Hampton Court Palace and East Molesey's popular Bridge Road with its, boutique and antique shops, cafés, bars and restaurants all nearby.

- Victorian Family Home • Four/Five Bedrooms • Two Bathrooms •
- Great Condition • Large Private Garden • No Chain •



SNELLERS

ESTATE AGENTS



Total area (approx.) : 139.5 sq. m (1501 sq. ft)

Snellers Hampton Hill Sales
197-201 High Street
Hampton Hill
TW12 1NL
020 8783 0083
hamptonsales@snellers.co.uk

Energy Rating: We aim to make our particulars both accurate and reliable. However they are not guaranteed; nor do they form part of an offer or contract. If you require clarification on any points then please contact us, especially if you're traveling some distance to view. Please note that appliances and heating systems have not been tested and therefore no warranties can be given as to their good working order