



## Archer Mews, TW12

£499,950

Set within this gated development is this rare opportunity to acquire this truly unique blend of warehouse style meets a modern finish in a newly built apartment including two bedrooms, two bathrooms, allocated parking and a private garden with the added bonus of no onward chain.





The accommodation offers a welcoming entrance hallway, a double bedroom, the principle bedroom with an en suite shower room and double doors onto a private garden, a stylish family bathroom and an open plan reception room including a high quality kitchen with integrated appliances and a dining area.

Further benefits include a long lease.

Bembridge House is architecturally designed by award winning developers Vertex Homes. Nestled behind Windmill Road and is ideally located for Hampton Hill Theatre and an array of highly desirable boutique shops, coffee shops and popular bars and restaurants. Both Fulwell train station and the Royal Bushy Park, famed for its roaming herds of red and fallow deer, are close by.

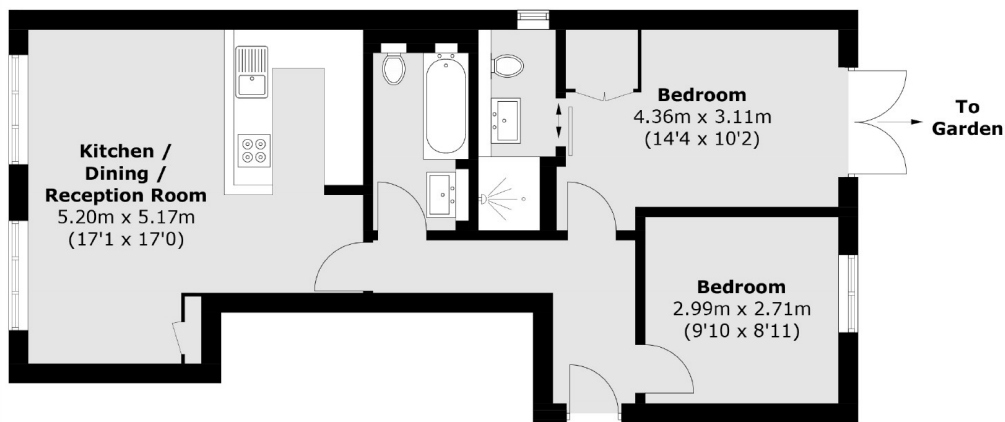
- Ground Floor • Two Bedrooms • Two Bathrooms •
- Immaculate Condition • Allocated Parking • No Chain •





# SNELLERS

ESTATE AGENTS



Total area (approx.): 62.0 sq. m (667.4 sq. ft)

Snellers Hampton Hill Sales  
197-201 High Street  
Hampton Hill  
TW12 1NL  
020 8783 0083  
[hamptonsales@snellers.co.uk](mailto:hamptonsales@snellers.co.uk)

Energy Rating: B We aim to make our particulars both accurate and reliable. However they are not guaranteed; nor do they form part of an offer or contract. If you require clarification on any points then please contact us, especially if you're traveling some distance to view. Please note that appliances and heating systems have not been tested and therefore no warranties can be given as to their good working order