

SNELLERS

ESTATE AGENTS



Morland Close, TW12

£650,000

Situated within a popular residential cul-de-sac is this detached family home offering approximately 939 sq ft of accommodation over two floors. Planning permission (now lapsed) was granted in 1989 for a part single, part two storey rear extension and side extension over the garage and in 2015 for a single storey rear extension. The property is offered with no forward chain.



The ground floor accommodation consists of an entrance hall with staircase leading to the first floor landing, a spacious reception room incorporating distinct living and dining areas with an understairs storage cupboard, a conservatory with double glazed sliding doors leading to the west facing rear garden, a fitted kitchen and a separate shower room.

The first floor accommodation consists of a landing with a storage cupboard, a principal double bedroom with a range of fitted wardrobes with a fitted vanity unit, two further bedrooms and a four piece family bathroom.

Outside to the front is a garden which is mostly laid top patio with a shrub hedge, a hardstanding driveway provides off street parking for one vehicle and provides direct access to a 155 sq ft attached garage with a uPVC double glazed door leading to the rear garden. To the rear is a west facing garden which is mostly laid to patio.

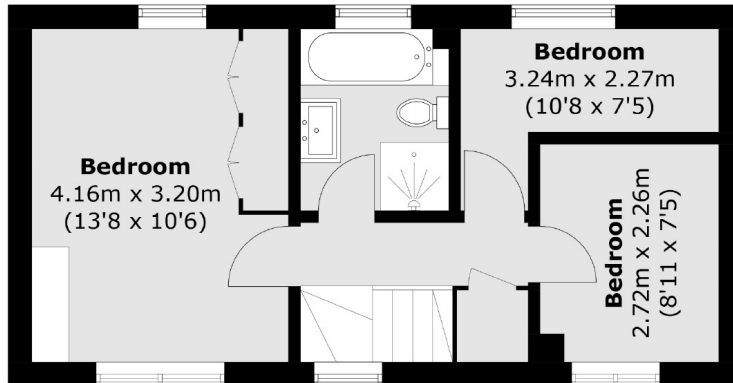
Morland Close forms part of the popular Nurseryland development and is ideally located for a number of schools and the recreational amenities of Hampton Common and Hatherop Park. The property is conveniently positioned for a local Sainsbury's Superstore, Hampton Station, Hampton Pool and Royal Bushy Park.

- Three Bedrooms • Reception Room • Conservatory •
- Fitted Kitchen • Two Bath/Shower Rooms • Garden & Garage •

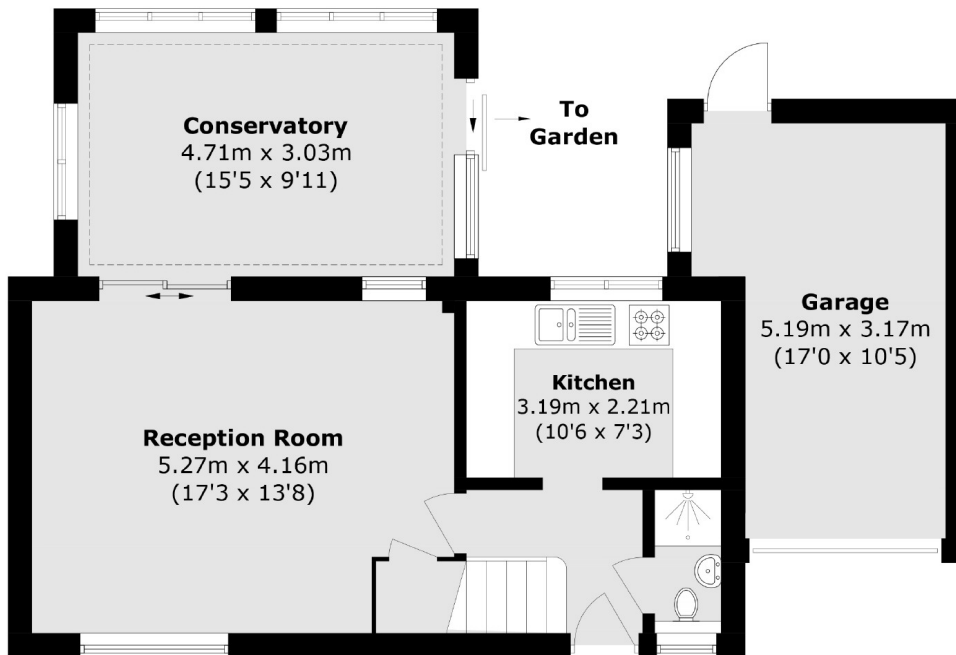


SNELLERS

ESTATE AGENTS



First Floor



Ground Floor

Total area (approx.): 87.3 sq. m (939.7 sq. ft)
Garage area (approx.): 14.4 sq. m (155.0 sq. ft)

Snellers Hampton Hill Sales
197-201 High Street
Hampton Hill
TW12 1NL
020 8783 0083
hamptonsales@snellers.co.uk

Energy Rating: D We aim to make our particulars both accurate and reliable. However they are not guaranteed; nor do they form part of an offer or contract. If you require clarification on any points then please contact us, especially if you're traveling some distance to view. Please note that appliances and heating systems have not been tested and therefore no warranties can be given as to their good working order