

# SNELLERS

ESTATE AGENTS



**Longford Close, TW12**

**£750,000**

A substantial well presented end of terrace family home offering approximately 1,600 sq ft of stylish accommodation over two floors. The property still offers the scope, s.t.p.p., to convert the loft space and convert the garage into habitable space creating a spectacular double fronted property.



The ground floor accommodation consists of an entrance hall with a range of fitted and built-in storage cupboards and staircase leading to the first floor landing, a bay fronted reception room with a feature fireplace and built-in storage cupboards with display shelving above to either recess, a second reception room, an extended fitted kitchen/dining room with a double glazed door and double glazed bi-fold doors leading to the rear garden, a utility room with a double glazed door leading to the rear garden, a separate cloakroom and an integral garage with an electric up and over door leading to the front driveway.

The first floor accommodation consists of a spacious landing with a storage cupboard and space for a study area, four double bedrooms and a modern family bathroom.

Neutrally decorated throughout the property benefits from uPVC double glazing, gas central heating and wooden flooring.

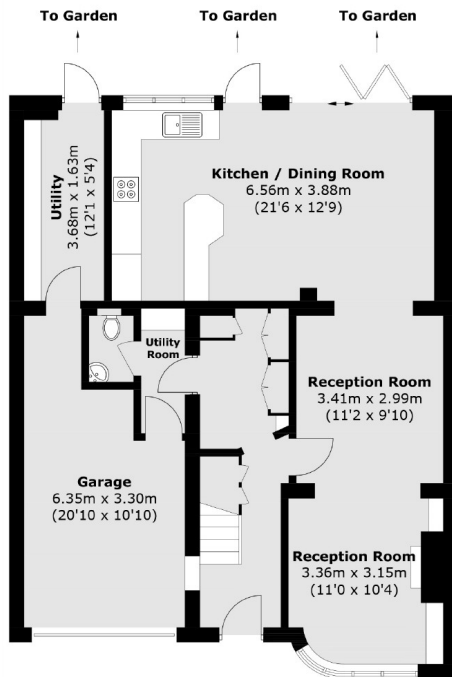
Outside to the rear is a large garden which is mostly laid to lawn with established flower and shrub borders, rest laid to patio with a storage shed. To the front is a hardstanding driveway providing off street parking for two/three vehicles with direct access to the integral garage via an electric up and over door.

Longford Close is a popular residential road ideally located for Sainsbury's St Clare Superstore and access to the A316. Hampton Hill High Street with its array of local amenities and services is located within one mile of the property.

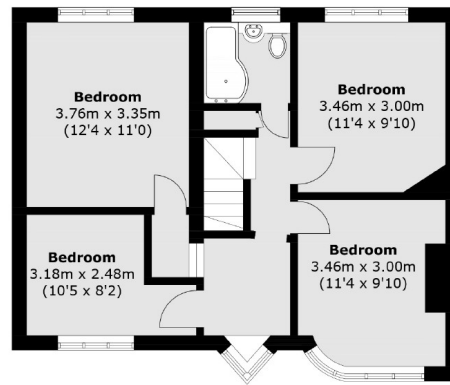


# SNELLERS

ESTATE AGENTS



**Ground Floor**



**First Floor**

Total area (approx.): 147.4 sq. m (1,586.6 sq. ft)  
(Including Garage)

Snellers Hampton Hill Sales  
197-201 High Street  
Hampton Hill  
TW12 1NL  
020 8783 0083  
hamptonsales@snellers.co.uk

Energy Rating: We aim to make our particulars both accurate and reliable. However they are not guaranteed; nor do they form part of an offer or contract. If you require clarification on any points then please contact us, especially if you're traveling some distance to view. Please note that appliances and heating systems have not been tested and therefore no warranties can be given as to their good working order