

SNELLERS

ESTATE AGENTS



Eastworth Road, KT16

£2,395 PCM

At over 120sq.m is this well presented four double bedroom semi detached Victorian house. With high ceilings and lots of light throughout, the property also benefits from having a summer house as well as off street parking.



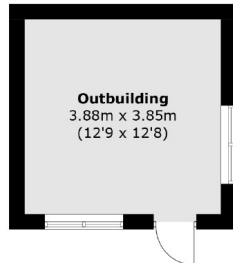
Eastworth road is ideally positioned for local schools and with easy Access to the M3, Chertsey Train Station and Chertsey Town Centre.

- Semi Detached • Four Double Bedrooms • Off Street Parking •
- Summer House • Close to Station • Close to Local Schools •

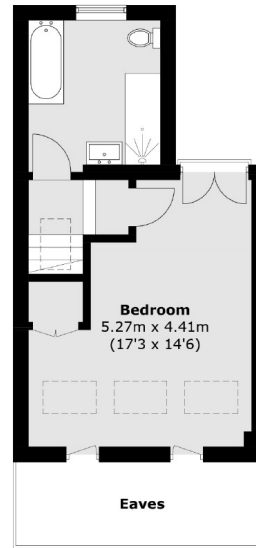


SNELLERS

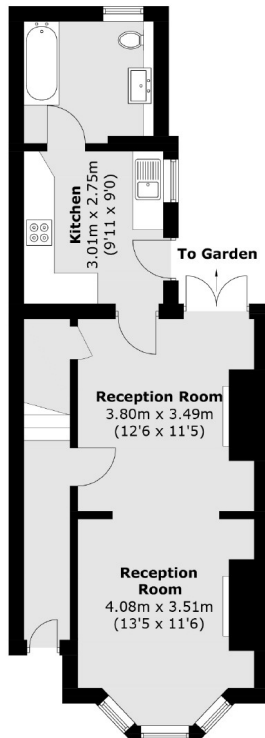
ESTATE AGENTS



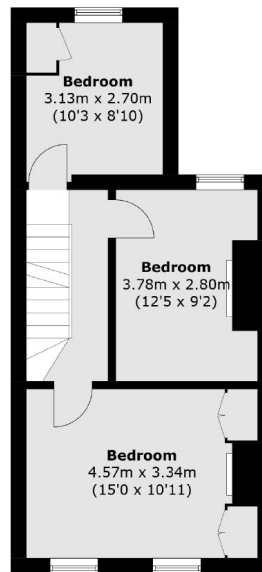
(Not Shown In Actual Location / Orientation)



Second Floor



Ground Floor



First Floor

Total area (approx.): 123.5 sq. m (1,329.4 sq. ft)
Outbuilding (approx.): 15.1 sq. m (162.5 sq. ft)
(Excluding Eaves)

Snellers Hampton Hill Lettings
197-201 High Street
Hampton Hill
TW12 1NL
020 8783 3633
hamptonlettings@snellers.co.uk

Energy Rating: We aim to make our particulars both accurate and reliable. However they are not guaranteed; nor do they form part of an offer or contract. If you require clarification on any points then please contact us, especially if you're traveling some distance to view. Please note that appliances and heating systems have not been tested and therefore no warranties can be given as to their good working order