

SNELLERS

ESTATE AGENTS



Dean Road, TW12

£465,000

An opportunity to purchase an end of terrace family home offering 726 sq ft of accommodation over two floors. The property would suit first time buyers, professionals, downsizers and families and is offered with no forward chain.



The ground floor accommodation consists of an entrance hall with a staircase leading to the first floor landing, a bay fronted double reception room with an understairs storage cupboard and an extended fitted kitchen/dining room with a uPVC double glazed door leading to the side garden.

The first floor accommodation consists of a landing a principal double bedroom with a range of fitted wardrobes, a large single bedroom with a fitted wardrobe and overhead storage cupboards and a separate modern family bathroom.

Outside to the side is a small garden which is laid to block brick hardstanding, a wooden gate provides access to the front. To the front is a garden with areas laid to block brick hardstanding and gravel.

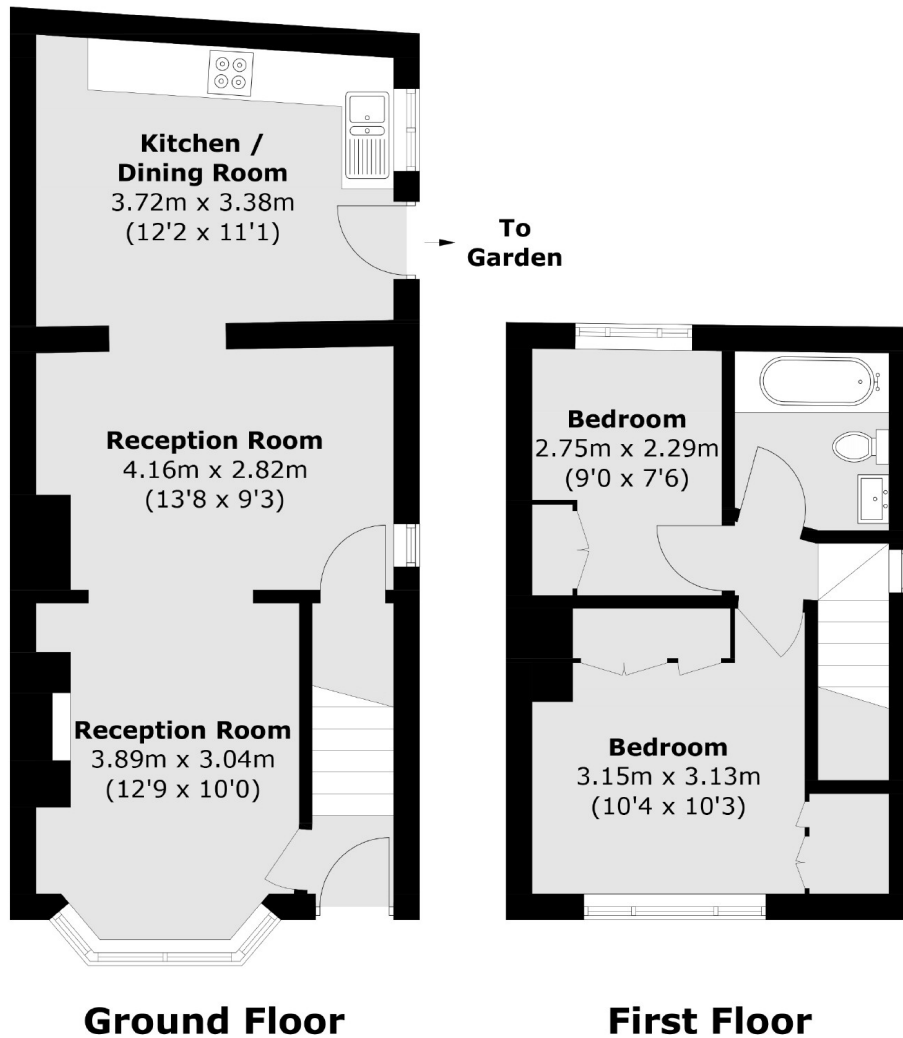
Dean Road is ideally located for a fantastic choice of state and private schools and the recreational amenities of Hampton Common. The property is conveniently positioned for a local Sainsbury's Superstore, Hampton Station, Hampton Open Air Swimming Pool and Royal Bushy Park.

- Two Bedrooms • Double Reception Room • Kitchen/Dining Room •
- First Floor Bathroom • Front & Side Gardens • No Forward Chain •



SNELLERS

ESTATE AGENTS



Total area (approx.): 67.5 sq. m (726.5 sq. ft)

Snellers Hampton Hill Sales
197-201 High Street
Hampton Hill
TW12 1NL
020 8783 0083
hamptonsales@snellers.co.uk

Energy Rating: We aim to make our particulars both accurate and reliable. However they are not guaranteed; nor do they form part of an offer or contract. If you require clarification on any points then please contact us, especially if you're traveling some distance to view. Please note that appliances and heating systems have not been tested and therefore no warranties can be given as to their good working order