



Orchard Farm Avenue, KT8

£490,000

Completed by Cala Homes in 2018 and benefitting from a new build warranty is this stunning ground floor purpose built apartment offering 801 sq ft of bright, spacious and stylish accommodation. The property would suit first time buyers, professionals, families, investors or downsizers.



The property is entered via a well maintained communal entrance hall with entryphone system.

The ground floor accommodation consists of an entrance hall with a large storage cupboard, a spacious double aspect reception room incorporating distinct living and dining areas with an open plan fitted kitchen, a principal double bedroom with a fitted wardrobe, a second double bedroom and a modern and contemporary styled family bathroom.

To the outside the property is surrounded by well maintained communal grounds. There is an allocated off street parking space and residents cycle storage.

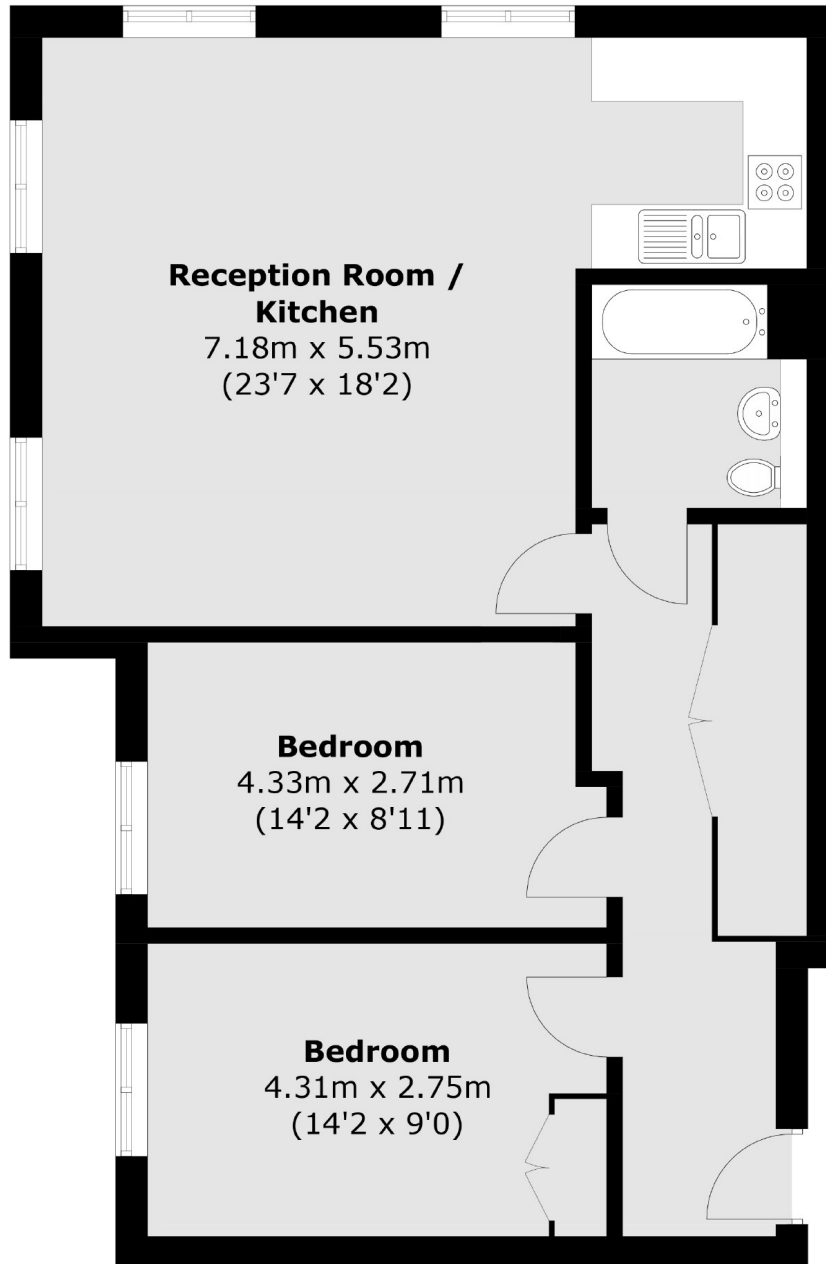
Set within a popular residential cul-de-sac, Orchard Farm Avenue is surrounded by history. Royal Bushy Park, Hampton Court Palace, the River Thames, Hampton Court station and East Molesey's popular Bridge Road with its, boutique and antique shops, cafés, bars and restaurants are all a short walk away.

- Two Double Bedrooms • Spacious Reception Room • Open Plan Kitchen •
- Modern Family Bathroom • Communal Grounds • Allocated Parking Space •



SNELLERS

ESTATE AGENTS



Total area (approx.): 74.5 sq. m (801.9 sq. ft)

Snellers Hampton Hill Sales
197-201 High Street
Hampton Hill
TW12 1NL
020 8783 0083
hamptonsales@snellers.co.uk

Energy Rating: We aim to make our particulars both accurate and reliable. However they are not guaranteed; nor do they form part of an offer or contract. If you require clarification on any points then please contact us, especially if you're traveling some distance to view. Please note that appliances and heating systems have not been tested and therefore no warranties can be given as to their good working order