

SNELLERS

ESTATE AGENTS



Elizabeth Way, TW13

£745,000

An opportunity to purchase a detached family home offering 1,219 sq ft of accommodation over two floors. The property offers the scope, subject to planning permission, to convert the integral garage into habitable accommodation and to extend to the rear at ground floor level and into the loft space.



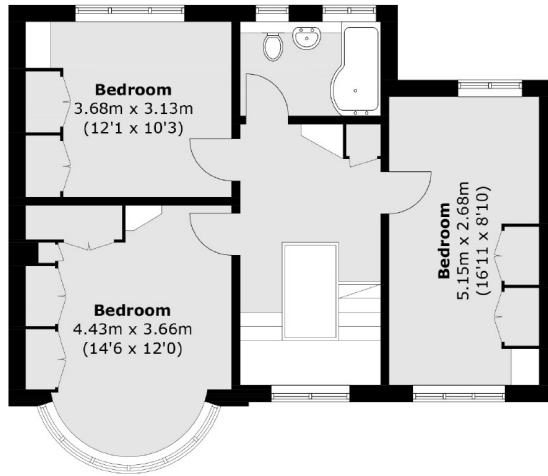
The ground floor accommodation consists of an entrance hall with a storage cupboard and staircase leading to the first floor landing, an L-shaped bay fronted reception room with a feature fireplace incorporating distinct living and dining areas with sliding double glazed doors leading to the rear garden, a fitted kitchen with a double glazed door leading to the rear garden and a separate cloakroom.

The first floor accommodation consists of a landing with a storage cupboard, a bay fronted double bedroom with a range of fitted wardrobes, two further double bedrooms with fitted wardrobes and a bathroom.

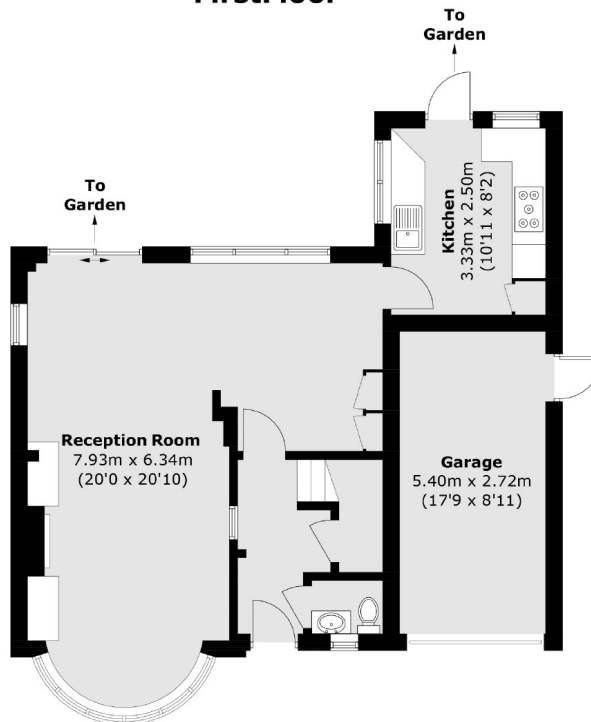
Outside to the front is a garden which is mostly laid to lawn, rest laid to block brick hardstanding providing off street parking for two vehicles with direct access to the 152 sq ft integral garage with a door leading to the rear garden, a wooden gate provides side access leading to the rear. To the rear is a large west facing garden which is mostly laid to lawn with mature flower and shrub displays and a willow tree, rest laid to wooden decking.

Elizabeth Way, Hanworth Park is steeped in history providing natural beauty and wildlife for the local community as well as the beautiful Hanworth Park House formally known as Manor House which was used as a hunting lodge by Henry VII whilst hunting on Hounslow Heath. A fire in 1797 completely demolished The Manor House and Hanworth Park House was rebuilt in its place, becoming iconic in the area.





First Floor



Ground Floor

Total area (approx.): 113.3 sq. m (1,219.6 sq. ft)
Garage: 14.2 sq. m (152.8 sq. ft)

Snellers Hampton Hill Sales
197-201 High Street
Hampton Hill
TW12 1NL
020 8783 0083
hamptonsales@snellers.co.uk

Energy Rating: E We aim to make our particulars both accurate and reliable. However they are not guaranteed; nor do they form part of an offer or contract. If you require clarification on any points then please contact us, especially if you're traveling some distance to view. Please note that appliances and heating systems have not been tested and therefore no warranties can be given as to their good working order