

SNELLERS

ESTATE AGENTS



Chelsea Close, TW12

£235,000

An opportunity to purchase a one double bedroom first floor purpose built apartment offering 326 sq ft of accommodation. The property would suit first time buyers, investors or buyers looking for a safe and secure pied-a-terre and benefits from a long 112 year leasehold interest.



The property is entered via a communal entrance hall with a staircase leading to the first floor communal landing.

The first floor accommodation consists of an entrance hall with two storage cupboards, a reception room incorporating distinct living and dining areas with an open plan fitted kitchen, a double aspect double bedroom and a separate modern bathroom.

The property benefits from uPVC double glazing throughout.

Outside to the front are well maintained communal grounds which are mostly laid to lawn with flower and shrub displays. To the rear are communal grounds which are mostly laid to hardstanding with communal bike storage.

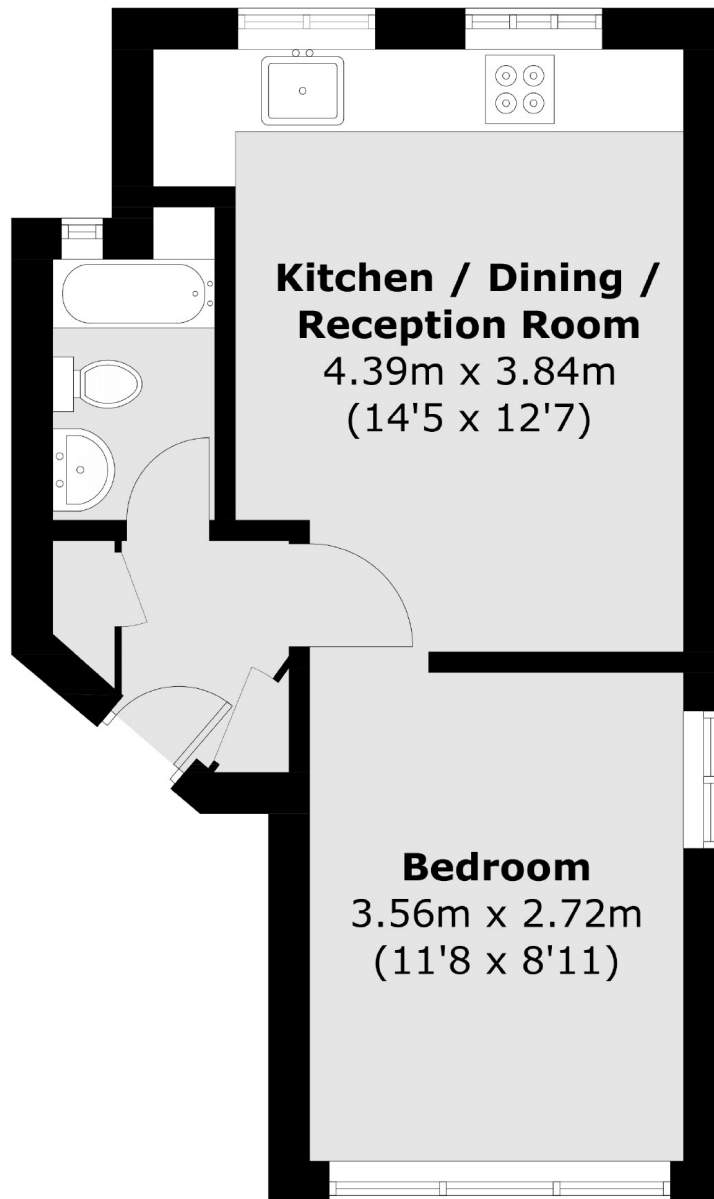
Situated within a popular residential cul-de-sac, Chelsea Close is ideally located for Hampton Hill Theatre and an array of highly desirable boutique shops, coffee shops and popular bars and restaurants. Both Fulwell train station and the Royal Bushy Park, famed for its mix of waterways, gardens, and roaming herds of red and fallow deer, are close by.

- One Double Bedroom • Reception Room • Open Plan Fitted Kitchen •
- Modern Bathroom • First Floor • Communal Grounds •



SNELLERS

ESTATE AGENTS



Total area (approx.): 30.3 sq. m (326.1 sq. ft)

Snellers Hampton Hill Sales
197-201 High Street
Hampton Hill
TW12 1NL
020 8783 0083
hamptonsales@snellers.co.uk

Energy Rating: We aim to make our particulars both accurate and reliable. However they are not guaranteed; nor do they form part of an offer or contract. If you require clarification on any points then please contact us, especially if you're traveling some distance to view. Please note that appliances and heating systems have not been tested and therefore no warranties can be given as to their good working order