

SNELLERS

ESTATE AGENTS



Gale Close, TW12

£450,000

Situated within a popular residential cul-de-sac is this mid terraced family home offering 718 sq ft of accommodation over two floors. The property would suit first time buyers, professionals, families, investors or buyers looking for a safe and secure pied-a-terre.



The ground floor accommodation consists of an entrance hall with a storage cupboard, an L-shaped reception room incorporating distinct living and dining areas with a staircase leading to the first floor landing and a separate fitted kitchen with a uPVC double glazed door leading to the rear garden.

The first floor accommodation consists of a landing, two double bedrooms, a single bedroom with a built-in storage cupboard and a family bathroom.

Outside to the front is a garden which is mostly laid to lawn with shrub displays. To the rear is a garden which is mostly laid to patio and gravel with flower and shrub borders and displays, a wooden gate provides rear access leading to a single garage located in a nearby block with additional resident and visitor parking provided on hardstanding.

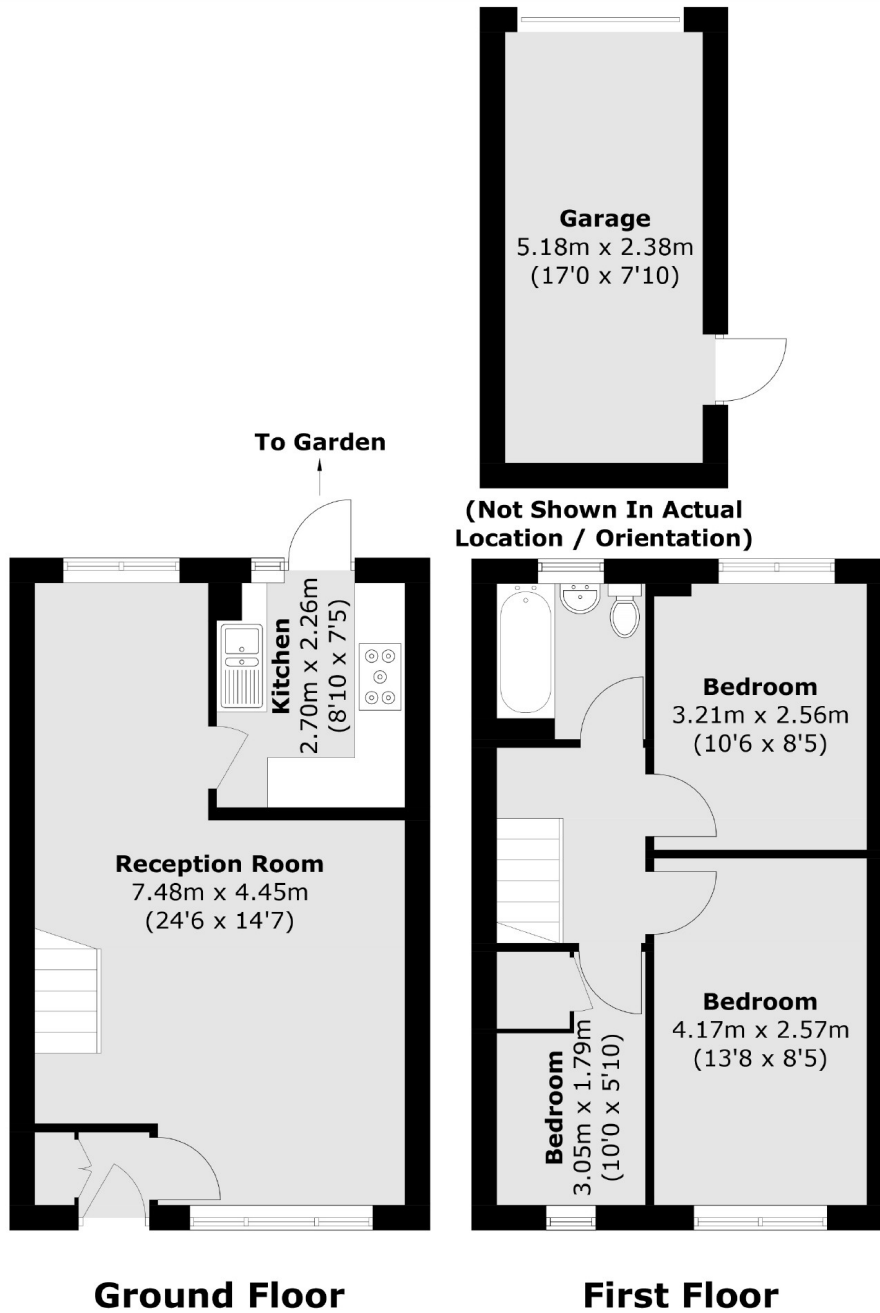
Gale Close forms part of the popular Nurserylands development and is ideally located for a number of schools and the recreational amenities of Hampton Common and Hatherop Park. The property is conveniently positioned for a local Sainsbury's Superstore, Hampton Station, Hampton Pool and Royal Bushy Park.

- Three Bedrooms • Spacious Reception Room • Fitted Kitchen •
- Family Bathroom • Private Rear Garden • Garage & Parking •



SNELLERS

ESTATE AGENTS



Total area (approx.): 66.7 sq. m (718.0 sq. ft)
Garage area (approx.): 12.4 sq. m (133.5 sq. ft)

Snellers Hampton Hill Sales
197-201 High Street
Hampton Hill
TW12 1NL
020 8783 0083
hamptonsales@snellers.co.uk

Energy Rating: C We aim to make our particulars both accurate and reliable. However they are not guaranteed; nor do they form part of an offer or contract. If you require clarification on any points then please contact us, especially if you're traveling some distance to view. Please note that appliances and heating systems have not been tested and therefore no warranties can be given as to their good working order