

SNELLERS

ESTATE AGENTS



Thames Street, TW12

£699,950

Situated between the banks of Hampton and Molesey, this detached brick-built property offers approximately 800 sq ft of lateral accommodation. The property benefits from granted planning permission to raise the ridge height and to reconfigure the internal space, transforming it into a stunning two-floor, four bedroom home on the existing structure.



The property features a vaulted ceiling with Velux windows, creating a bright and spacious environment. The ground floor accommodation consists of a spacious reception room with distinct living and dining areas, an open-plan fitted kitchen with a utility cupboard and a door leading to the rear. The principal double bedroom comes with a large ensuite bathroom, while the second double bedroom includes a built-in wardrobe and an ensuite shower room.

Outside, a large south-facing terrace provides the perfect place to entertain or simply enjoy the river activity. The property also boasts a second south facing terrace and a 35-foot private mooring. On both the Hampton and Molesey sides of the river, there is parking for island residents as well as mooring spaces for day boats available (not included in this sale).

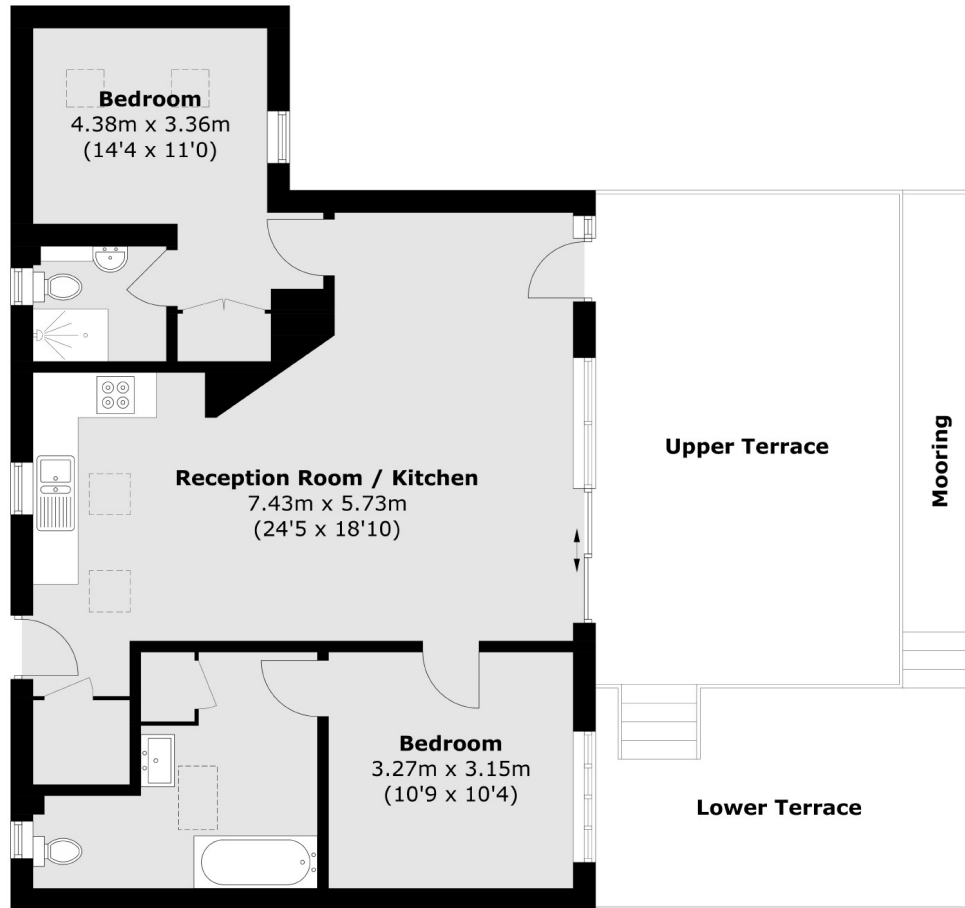
Garrick's Ait, is named after the 18th-century actor David Garrick, who purchased a property on the Hampton bank in 1754, known as Garrick's Villa. In its grounds, he famously built a garden folly known as the Temple to Shakespeare.

Accessible only by boat, Garrick's Ait is set in a wonderful location surrounded by history. Royal Bushy Park, Hampton Court Palace, the River Thames, Hurst Park, Hampton Court and Hampton stations and East Molesey's popular Bridge Road with its, boutique and antique shops, cafés, bars and restaurants are all conveniently placed.



SNELLERS

ESTATE AGENTS



Total area (approx.): 73.5 sq. m (791.1 sq. ft)
Terrace area (approx.): 48.3 sq. m (519.2 sq. ft)

Snellers Hampton Hill Sales
197-201 High Street
Hampton Hill
TW12 1NL
020 8783 0083
hamptonsales@snellers.co.uk

Energy Rating: D We aim to make our particulars both accurate and reliable. However they are not guaranteed; nor do they form part of an offer or contract. If you require clarification on any points then please contact us, especially if you're traveling some distance to view. Please note that appliances and heating systems have not been tested and therefore no warranties can be given as to their good working order