

SNELLERS

ESTATE AGENTS



Castle Way, TW13

£415,000

Set on a private road within stunning established landscaped gardens is this well presented 1930's mansion block purpose built apartment offering approximately 1,000 sq ft of lateral accommodation. The property is offered with a share of freehold and benefits from no forward chain.



The property is entered via a communal entrance hall with entryphone system and staircase leading to the first floor landing.

The first floor accommodation consists of a large entrance hall with a storage cupboard, a bay fronted reception room, a fitted kitchen/dining room with a utility room and a door providing access to a rear external fire escape, three double bedrooms, a four piece family bathroom and a separate wc.

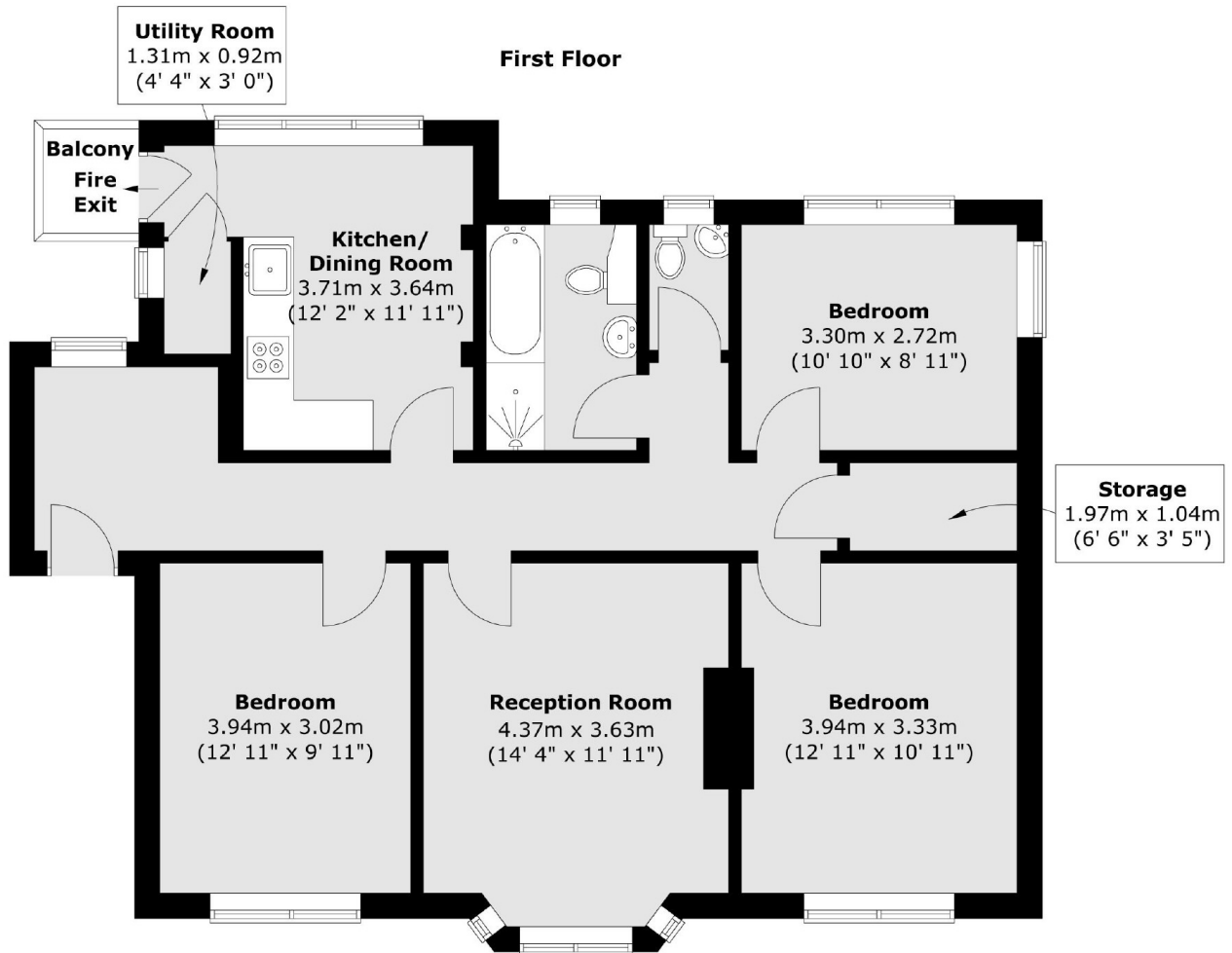
To the outside are extensive stunning communal grounds which are mostly laid to lawn with established flower and shrub displays with mature trees offering areas with landscaped and natural planting with gravel and paved walkways with an ornamental pond. Rest laid to hardstanding providing off street parking for residents and visitors.

Tudor Court, Hanworth Park is steeped in history providing natural beauty and wildlife for the local community as well as the beautiful Hanworth Park House formally known as Manor House which was used as a hunting lodge by Henry VII whilst hunting on Hounslow Heath. Upon his death in 1509, The Manor was passed to his son Henry VIII, and became The Royal Manor of Hanworth. A fire in 1797 completely demolished The Manor House and Hanworth Park House was rebuilt in its place, becoming iconic in the area.



SNELLERS

ESTATE AGENTS



Total area (approx.) : 89.8 sq. m (967 sq. ft)
Total balcony area (approx.) : 1.4 sq. m (15 sq. ft)

Snellers Hampton Hill Sales
197-201 High Street
Hampton Hill
TW12 1NL
020 8783 0083
hamptonsales@snellers.co.uk

Energy Rating: C We aim to make our particulars both accurate and reliable. However they are not guaranteed; nor do they form part of an offer or contract. If you require clarification on any points then please contact us, especially if you're traveling some distance to view. Please note that appliances and heating systems have not been tested and therefore no warranties can be given as to their good working order