



Holly Bush Lane, TW12

£1,400 PCM

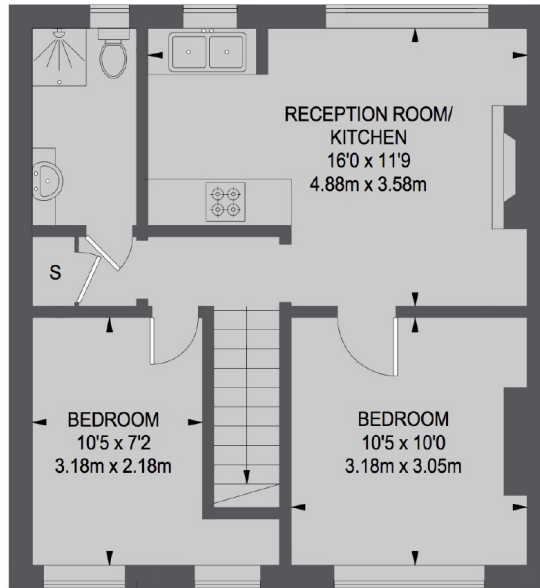
A lovely two bedroom first floor maisonette that includes an open plan living room/kitchen and a modern bathroom suite. The property also has a large private rear garden.

Holly Bush Lane is a popular residential road in Hampton Village with local shops nearby and with easy access to Hampton station with direct links into London Waterloo.

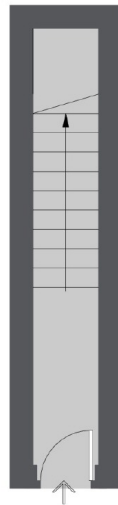
- Two Bedrooms • Open Plan • Modern Bathroom •
- Private Garden • On Street Parking • Quiet Residential Road •

SNELLERS

ESTATE AGENTS



FIRST FLOOR



GROUND FLOOR

TOTAL APPROX. FLOOR AREA
532 SQ. FT. (49.43 SQ. M.)

Snellers Hampton Hill Lettings
197-201 High Street
Hampton Hill
TW12 1NL
020 8783 3633
hamptonlettings@snellers.co.uk

Energy Rating: We aim to make our particulars both accurate and reliable. However they are not guaranteed; nor do they form part of an offer or contract. If you require clarification on any points then please contact us, especially if you're traveling some distance to view. Please note that appliances and heating systems have not been tested and therefore no warranties can be given as to their good working order