



## International Way, TW16

£225,000

Set within a gated development is this well presented first floor purpose built modern apartment offering approximately 420 sq ft of stylish accommodation. The property would suit first time buyers, professionals, investors or buyers looking for a safe and secure pied-a-terre.



The property is entered via a well maintained communal entrance hall with staircase leading to the first floor communal landing.

The first floor accommodation consists of an entrance hall with a storage cupboard, a reception room, a double bedroom with fitted wardrobes, a fitted kitchen and a modern bathroom.

Neutrally decorated the property benefits from double glazing throughout and is offered with a long 135 year leasehold interest.

To the outside are well maintained communal gardens which are mostly laid to lawn with mature shrubs and trees. An allocated parking space is provided on a hardstanding.

International Way is ideally located for a Tesco Extra and the amenities and services at Sunbury Cross Shopping Centre including a Marks & Spencer Simply Food, a Boots Pharmacy, a Costa Coffee and a 24 hour gym. The property provides easy access onto the M3 motorway and is within 0.4 miles and 0.9 miles of Upper Haliford and Sunbury train stations respectively.

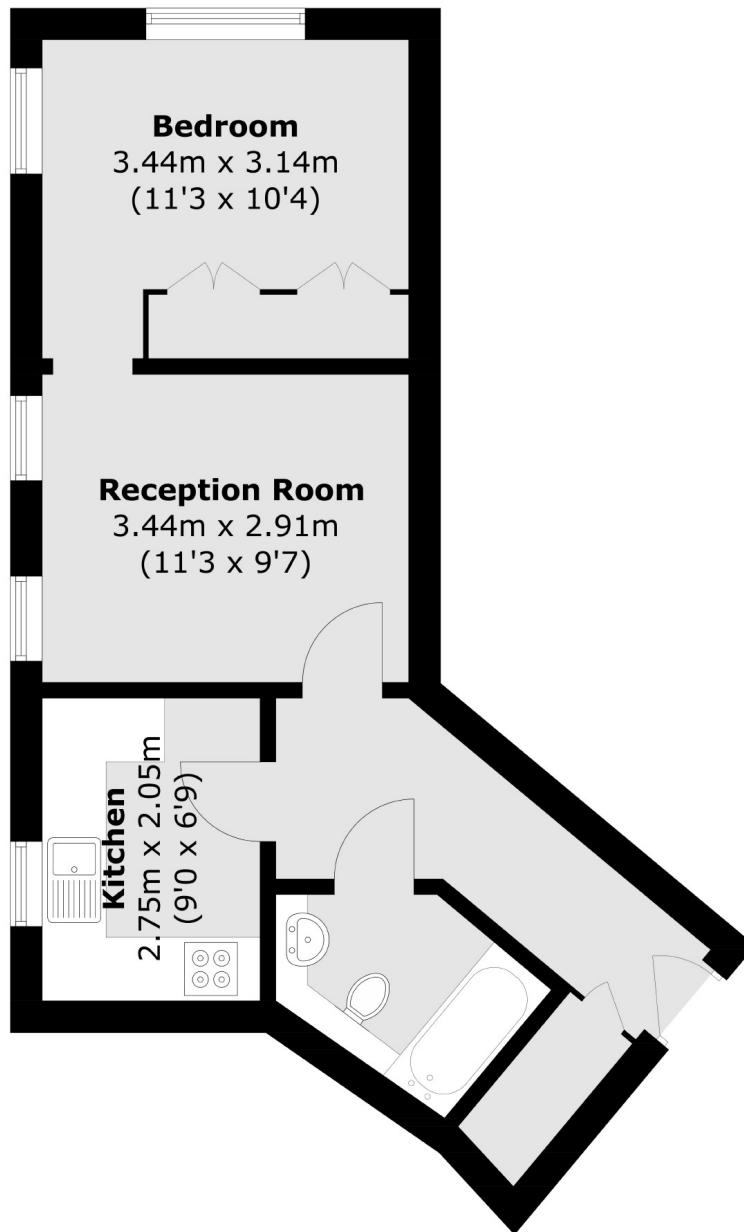
- One Double Bedroom • Reception Room • Separate Fitted Kitchen •
- Modern Bathroom • First Floor • Allocated Parking Space •





# SNELLERS

ESTATE AGENTS



Total area (approx.): 39.0 sq. m (419.8 sq. ft)

Snellers Hampton Hill Sales  
197-201 High Street  
Hampton Hill  
TW12 1NL  
020 8783 0083  
hamptonsales@snellers.co.uk

Energy Rating: We aim to make our particulars both accurate and reliable. However they are not guaranteed; nor do they form part of an offer or contract. If you require clarification on any points then please contact us, especially if you're traveling some distance to view. Please note that appliances and heating systems have not been tested and therefore no warranties can be given as to their good working order