

# SNELLERS

ESTATE AGENTS



**High Street, TW12**

**£800,000**

A staggered end of terrace period styled property offering approximately 1,155 sq ft of accommodation over two floors. The property is offered with no forward chain and would suit professionals, downsizers and families, as the property is surrounded by a number of highly regarded schools.



The ground floor accommodation consists of an entrance hall with a storage cupboard and staircase leading to the first floor landing, a reception room with a feature fireplace, a conservatory with French doors leading to the rear garden, a fitted kitchen/dining room and a separate cloakroom.

The first floor accommodation consists of a landing, a principal double bedroom with fitted bedroom furniture incorporating fitted wardrobes and built-in drawer units with storage cupboards above with an ensuite shower room, a second double bedroom (which was formally two bedrooms and could easily be divided with a partition wall) and a family bathroom. Outside to the front and side is a garden with flower and shrub displays surrounded by a brick wall with metal railings. To the rear is a south facing garden which is laid to a decorative patio and gravel with flower and shrub displays with a wooden gate leading onto the High Street, a part glazed door provides access to a detached garage with parking to the front.

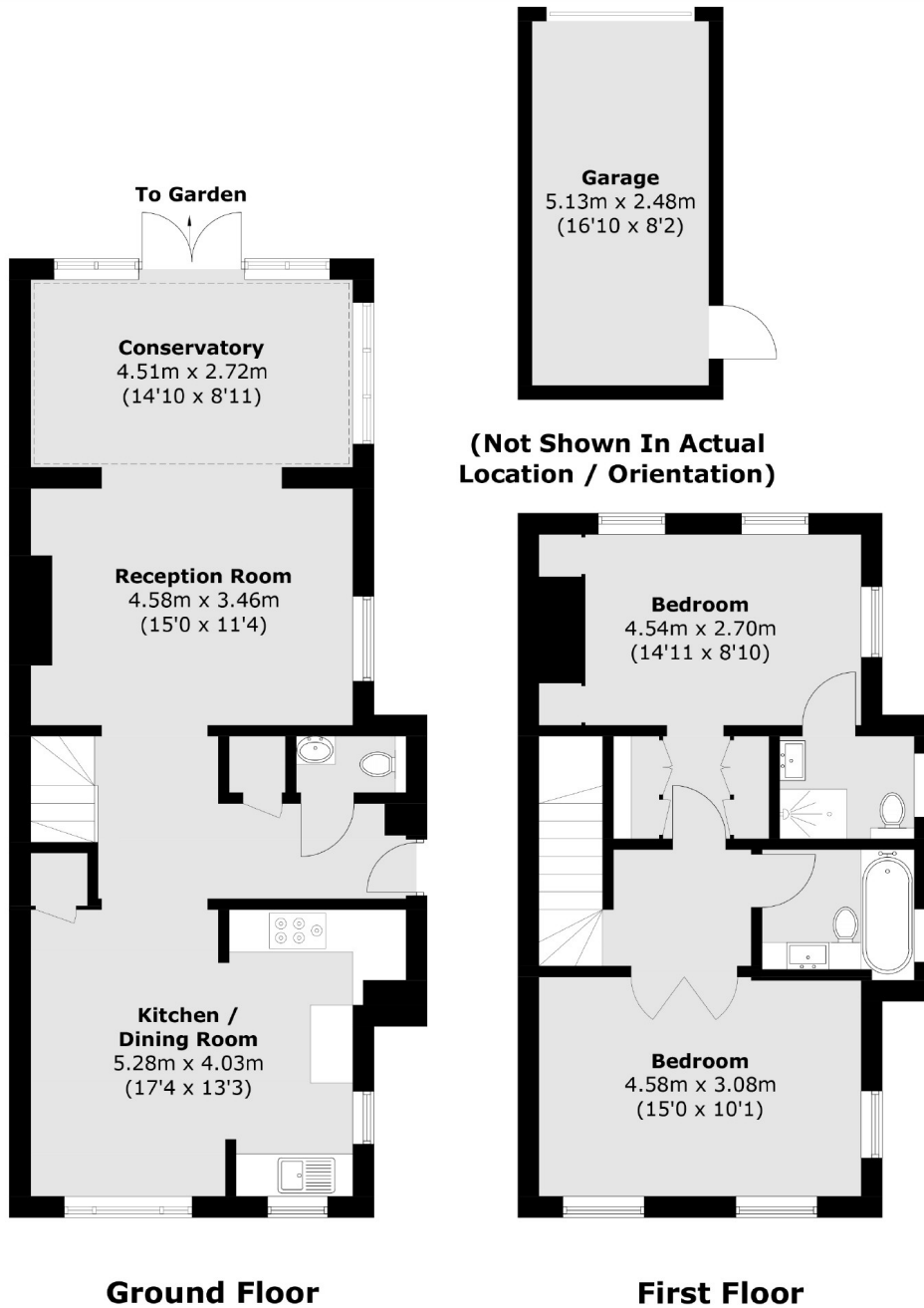
The High Street is ideally located for an array of highly desirable boutique shops, coffee shops and popular bars and restaurants. Both Fulwell train station and the Royal Bushy Park, famed for its mix of waterways, gardens, and roaming herds of red and fallow deer, are close by.

- Two/Three Bedrooms • Reception Room • Kitchen/Dining Room •
- Two Bath/Shower Rooms • Garage & Parking • South Facing Garden •



# SNELLERS

ESTATE AGENTS



Total area (approx.): 107.2 sq. m (1,153.8 sq. ft)  
Garage (approx.): 12.9 sq. m (138.8 sq. ft)

Snellers Hampton Hill Sales  
197-201 High Street  
Hampton Hill  
TW12 1NL  
020 8783 0083  
hamptonsales@snellers.co.uk

Energy Rating: D We aim to make our particulars both accurate and reliable. However they are not guaranteed; nor do they form part of an offer or contract. If you require clarification on any points then please contact us, especially if you're traveling some distance to view. Please note that appliances and heating systems have not been tested and therefore no warranties can be given as to their good working order