



Burtons Road, TW12

£475,000

A beautifully presented purpose built ground floor apartment offering approximately 750 sq ft of stylish accommodation. The property would suit professionals, downsizers and families, as the property is surrounded by a number of highly regarded schools. No forward chain.



The property is entered via a well maintained communal entrance hall with a communal door leading to rear communal garden.

The ground floor accommodation consists of an entrance hall with two storage cupboards, a spacious reception room incorporating distinct living and dining areas, a fitted kitchen with integrated appliances, two double bedrooms and a modern family bathroom.

Outside to the front is a communal driveway providing hardstanding off street parking for residents leading to a private 127 sq ft garage, a gate provides access to the rear. To the rear is a well maintained southerly facing communal garden which is mostly laid to lawn with established flower and shrub borders and displays, rest laid to patio.

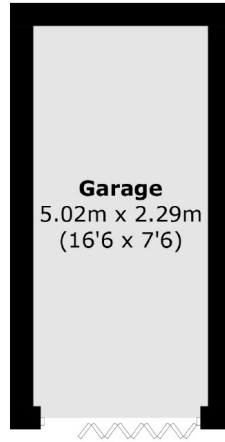
Set back from Burtons Road within a private road opposite Fulwell Golf Course, Lime Tree Court is a popular small residential development ideally located for Hampton Hill High Street offering an array of highly desirable boutique shops, coffee shops and popular bars and restaurants. Fulwell train station and Bushy Park, famed for its mix of waterways, gardens, and roaming herds of red and fallow deer, are all close by.

- Two Double Bedrooms • Spacious Reception Room • Fitted Kitchen •
- Modern Bathroom • Garage & Parking • Communal Garden •

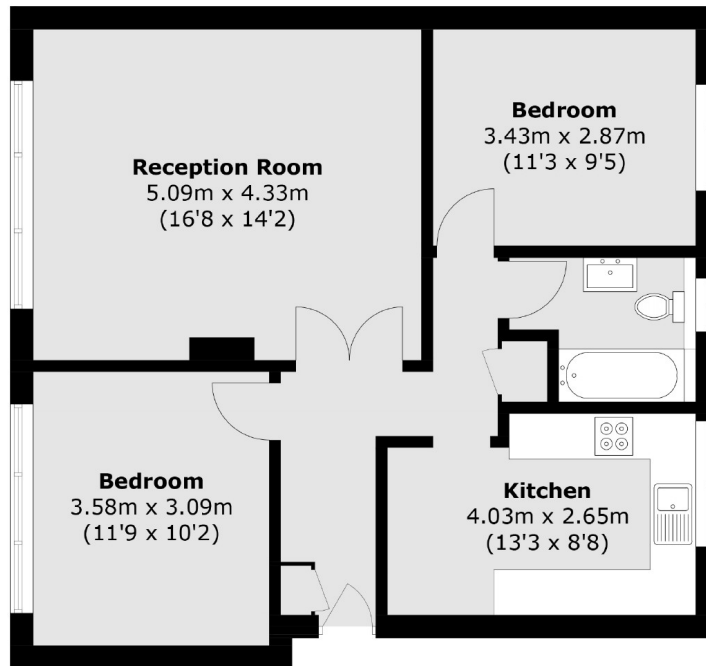


SNELLERS

ESTATE AGENTS



(Not Shown In Actual
Location / Orientation)



Ground Floor

Total area (approx.): 68.3 sq. m (735.2 sq. ft)
Garage: 11.8 sq. m (127.0 sq. ft)

Snellers Hampton Hill Sales
197-201 High Street
Hampton Hill
TW12 1NL
020 8783 0083
hamptonsales@snellers.co.uk

Energy Rating: D We aim to make our particulars both accurate and reliable. However they are not guaranteed; nor do they form part of an offer or contract. If you require clarification on any points then please contact us, especially if you're traveling some distance to view. Please note that appliances and heating systems have not been tested and therefore no warranties can be given as to their good working order