



Redford Close, TW13

£199,950

An opportunity to purchase a modern second (top) floor purpose built apartment offering 425 sq ft of accommodation. The property would suit first time buyers, professionals, investors or buyers looking for a pied-a-terre and benefits from a long 161 year leasehold interest.



The property is entered via a communal entrance hall with entryphone system and staircase leading to second floor landing.

The accommodation consists of an entrance hall with a storage cupboard, a reception room incorporating distinct living and dining areas, a fitted kitchen, a double bedroom with a range of fitted wardrobes and a modern bathroom.

To the outside are well maintained communal grounds with areas laid to lawn with shrub and tree displays including a children's play area, rest laid to hardstanding providing off street parking for residents and visitors.

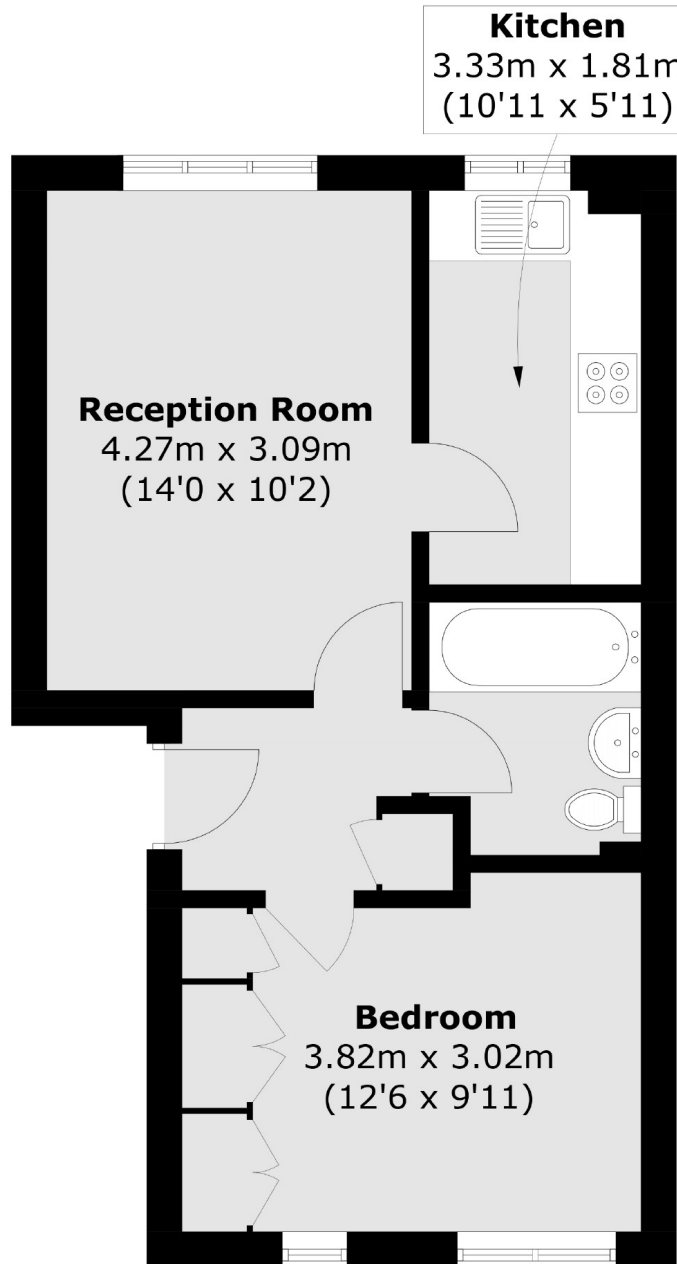
Redford Close is situated within a popular residential cul-de-sac ideally located for the amenities and services on Feltham High Street including the train station with a fast service into Waterloo with the additional benefit of being on the H26 bus route giving you a direct route to Hatton Cross Underground Station. Bedfont Lakes, which is a nature reserve with long walks and beautiful scenery, are only a short drive away.

- One Double Bedroom • Reception Room • Fitted Kitchen •
- Bathroom • Communal Grounds • Resident Parking •



SNELLERS

ESTATE AGENTS



Total area (approx.): 39.5 sq. m (425.1 sq. ft)

Snellers Hampton Hill Sales
197-201 High Street
Hampton Hill
TW12 1NL
020 8783 0083
hamptonsales@snellers.co.uk

Energy Rating: C We aim to make our particulars both accurate and reliable. However they are not guaranteed; nor do they form part of an offer or contract. If you require clarification on any points then please contact us, especially if you're traveling some distance to view. Please note that appliances and heating systems have not been tested and therefore no warranties can be given as to their good working order