

SNELLERS

ESTATE AGENTS



Grove Crescent, TW13

£575,000

A spacious, three bedroom, end-of-terrace family home with off-street parking. Having been extended to the rear, this house offers plenty of living space for a growing family with a lovely open plan feel to the ground floor yet with separate dining and living areas, as well as the added benefit of a ground floor WC and conservatory.

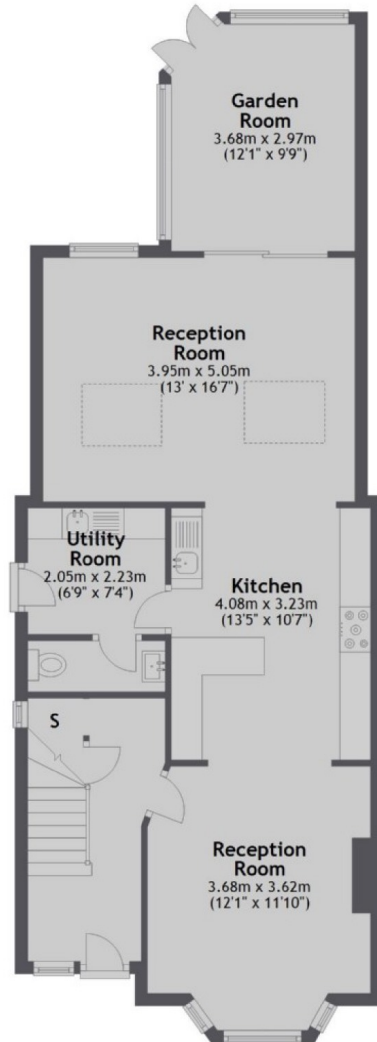
Grove Crescent is ideally located on the Hampton/Hanworth borders providing easy access to the A316 well as being close to local amenities, schools and transport links to Heathrow, Richmond and Kingston.

- Three Bedrooms • Two Reception Rooms • Large Garden •
- Potential To Extend STPP • Utility Room • Off-Street Parking •

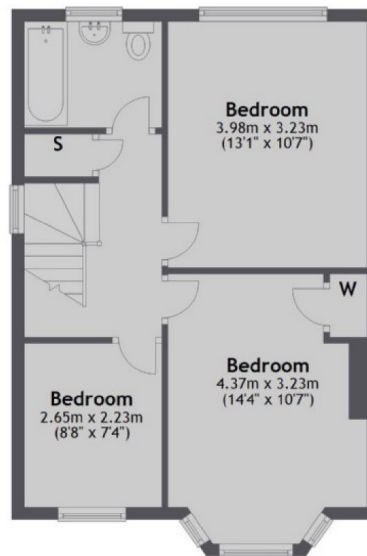
SNELLERS

ESTATE AGENTS

Ground Floor



First Floor



Total area: approx. 119.9 sq. metres (1290.2 sq. feet)

Snellers Hampton Hill Sales
197-201 High Street
Hampton Hill
TW12 1NL
020 8783 0083
hamptonsales@snellers.co.uk

Energy Rating: D We aim to make our particulars both accurate and reliable. However they are not guaranteed; nor do they form part of an offer or contract. If you require clarification on any points then please contact us, especially if you're traveling some distance to view. Please note that appliances and heating systems have not been tested and therefore no warranties can be given as to their good working order