



Westwick Gardens, W14

£1,500,000

A beautiful and immaculate three bedroom apartment set over two floors in an ideal Brook Green location. This property has a spacious thirty five foot reception room, a separate modern kitchen, private garden and terrace.

Westwick Gardens is located in the sought after area of Brook Green close to the local cafes and restaurants. The green space of Holland Park and the shops of High Street Kensington are a short walk away.

Features

- Three Bedrooms
- Split Level Maisonette
- Two Bathrooms
- Over 1700sqft
- Terrace & Garden
- Brook Green



Westwick Gardens, W14

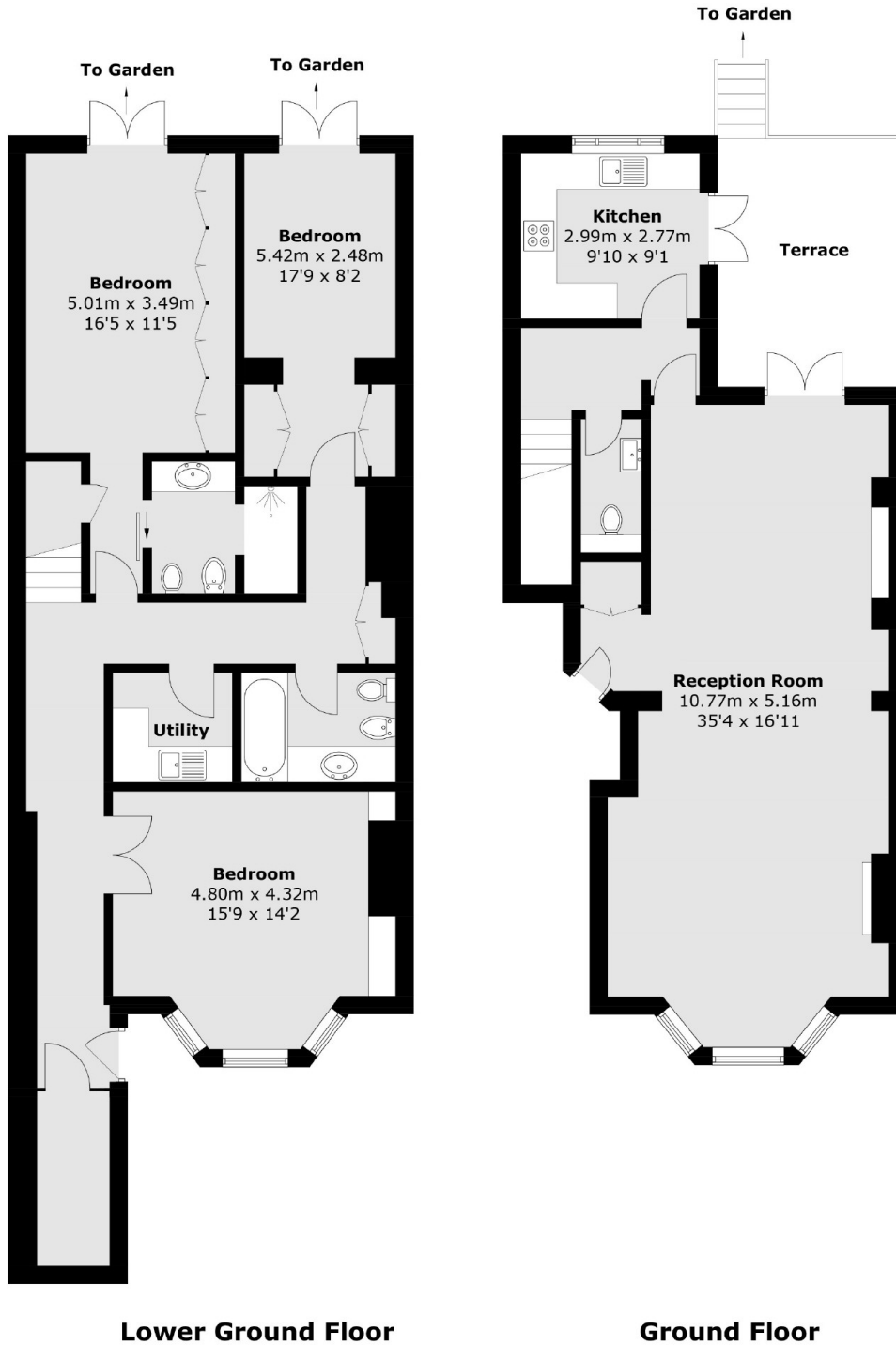
This spectacular maisonette occupies the ground and lower ground floor of this Victorian property. Full of period charm and character features throughout. It benefits from large proportions, wonderful high ceilings and wooden flooring with the potential to really make this property your perfect home.

The property measures over 1700sqft has a grand reception room on the raised ground floor leading to a terrace and down on to private garden. On the lower ground the flat has three bedrooms, two large bathrooms, utility room and ample storage on offer with additional access to the garden from this level.

This property is full of character and would make a truly incredible opportunity for any buyer who purchases it.



Westwick Gardens, London, W14



Total area (approx.): 161.8 sq. m (1,741.6 sq. ft)
Terrace: 13.0 sq. m (139.9 sq. ft)

Dexters

Shepherds Bush and Brook Green
53 Shepherds Bush Green
London
W12 8PS
Sales
020 8740 2900

Energy Rating: C. We aim to make our particulars both accurate and reliable. However they are not guaranteed; nor do they form part of an offer or contract. If you require clarification on any points then please contact us, especially if you're traveling some distance to view. Please note that appliances and heating systems have not been tested and therefore no warranties can be given as to their good working order.

RICS Regulated
Estate Agent
and Letting Agent

dexters.co.uk