



Askew Road, W12

£490 Per week

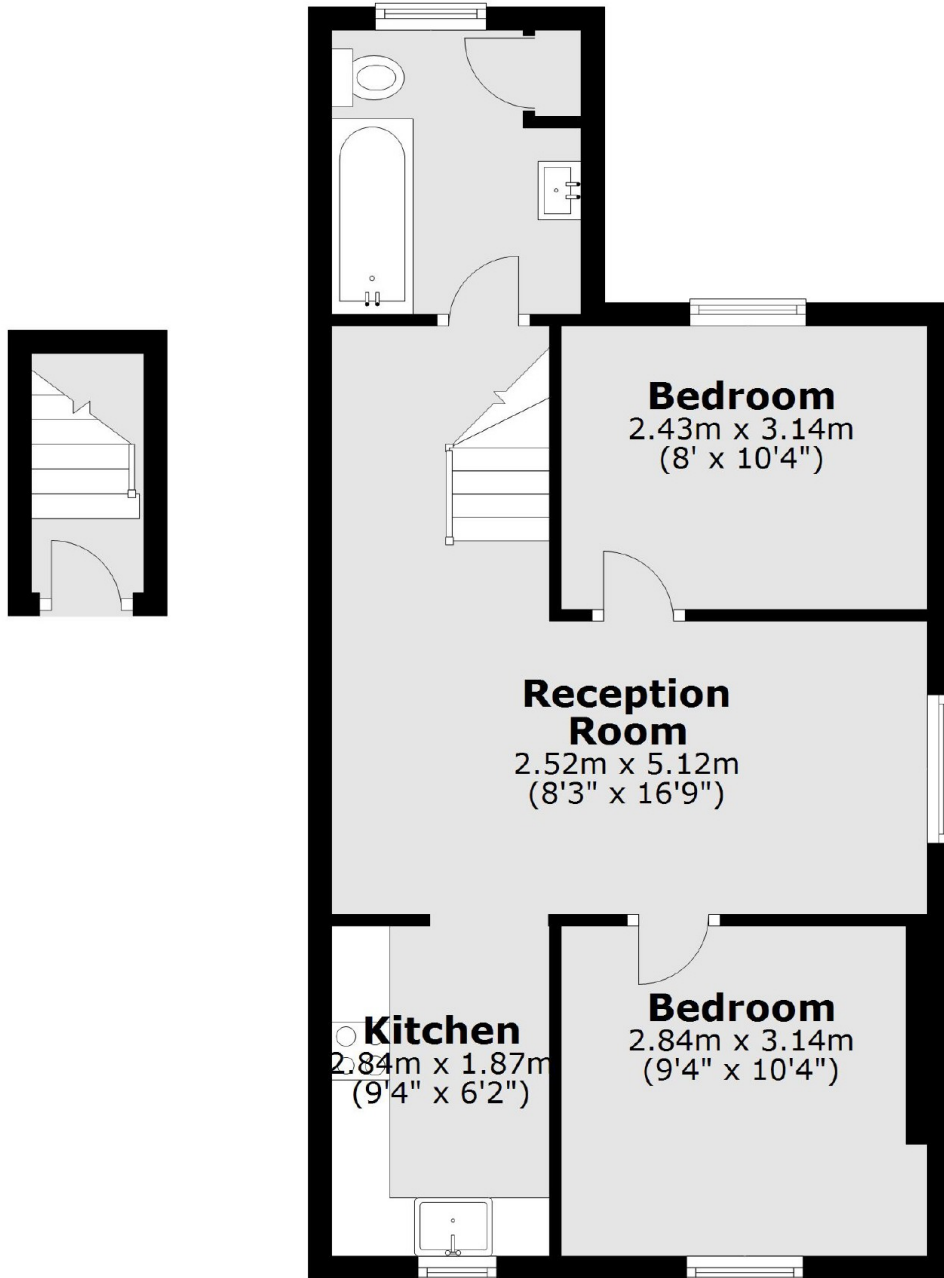
An immaculately finished two bedroom flat on the first floor of this Victorian period conversion. This property is split level, has open plan living and is perfect for a couple or two sharers.

Askew Road is located close to the amenities of both Goldhawk and Uxbridge Road. The green space of Ravenscourt Park is a short walk away and transport links are near by.

Features

Two Bedrooms
Split Level
Open Plan Living
Modern
Askew Village

Askew Road,
London, W12



Total area: approx. 48.3 sq. metres (520.2 sq. feet)