



Blythe Road, W14

£2,000,000

Dexters



Blythe Road, London, W14

This wonderful family house is set over four floors and has a double reception room with a bespoke fitted kitchen and French doors to the westerly facing garden.

The master suite has a gorgeous en suite, and the additional four bedrooms have three stunning bath/shower rooms.

The basement has been converted into utility room and has a separate shower and guest toilet. This house makes a perfect home.

Westfield London is also within walking distance.

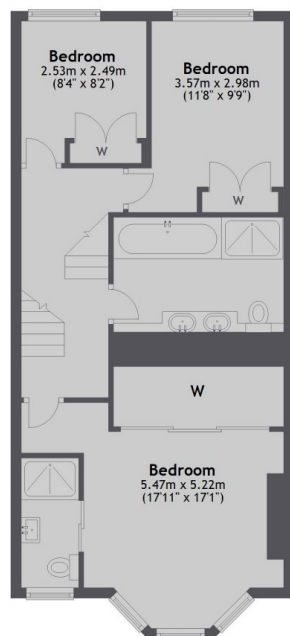
Blythe Road is in the heart of Brook Green, bordering Kensington. There are excellent schools close by and the transport hubs of Hammersmith Broadway and Shepherds Bush.

Features

- House
- Five Bedrooms
- West Facing Garden
- Double Reception Room
- Heart Of Brook Green
- Kensington High Street Close



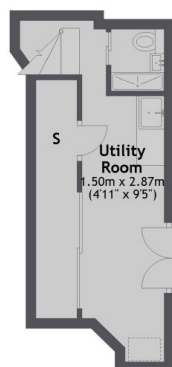
Blythe Road, London, W14



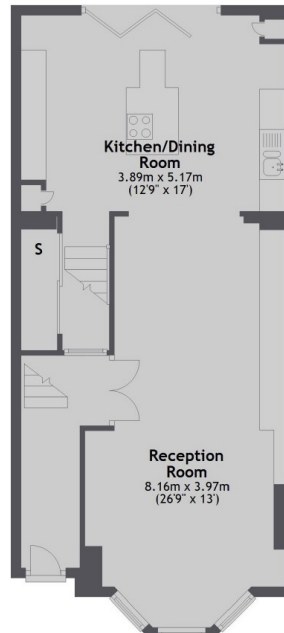
First Floor



Second Floor



Lower Ground Floor



Ground Floor

Total area: approx. 186.5 sq. metres (2007.2 sq. feet)

Dexters

Shepherds Bush and Brook
53 Shepherds Bush Green,
Shepherds Bush, London, W12
Sales
020 8740 2900

Energy Rating: D. We aim to make our particulars both accurate and reliable. However they are not guaranteed; nor do they form part of an offer or contract. If you require clarification on any points then please contact us, especially if you're traveling some distance to view. Please note that appliances and heating systems have not been tested and therefore no warranties can be given as to their good working order.

RICS | Regulated
Estate Agent
and Letting Agent

dexters.co.uk