



## Lakeside Road, W14

£549,950

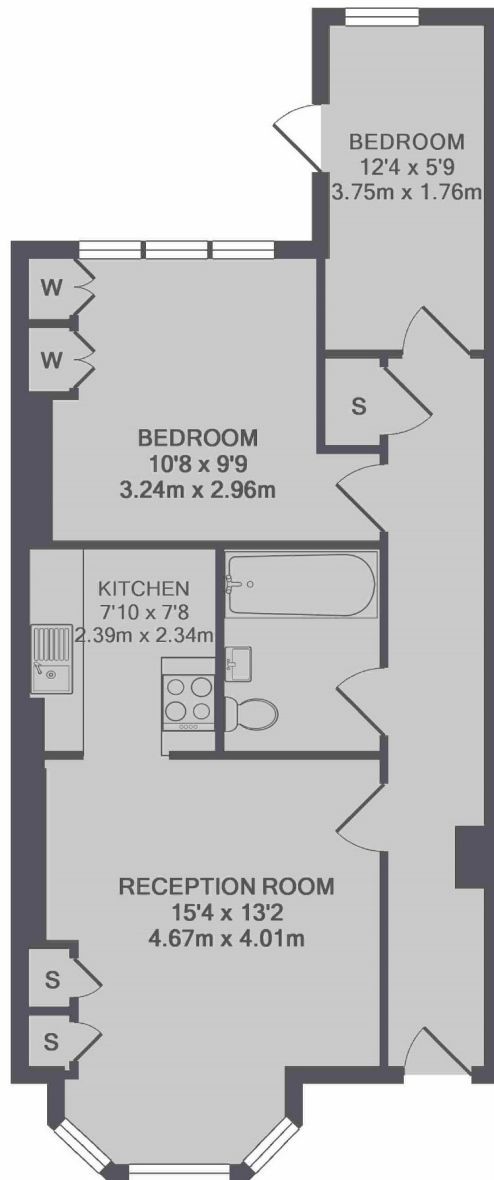
A delightful two bedroom garden flat with its own front door set in the heart of Brook Green, offering a good sized living space perfect for a first time buyer.

Lakeside Road is located in Brook Green with easy access to Westfield for a range of shops and restaurants and Shepherds Bush station. The green space of Holland Park is located nearby.

### Features

- Two Bedrooms
- Own Entrance
- Private Garden
- Open Plan Living
- Excellent Location
- Good Condition

## Lakeside Road, London, W14



TOTAL APPROX. FLOOR AREA 599 SQ.FT. (55.6 SQ.M.)

### Contact

To arrange a viewing call our office on the number below or visit our website.



Energy Rating: D. We aim to make our particulars both accurate and reliable. However they are not guaranteed; nor do they form part of an offer or contract. If you require clarification on any points then please contact us, especially if you're traveling some distance to view. Please note that appliances and heating systems have not been tested and therefore no warranties can be given as to their good working order.