



Emlyn Gardens, W12

£576 Per week

This three bedroom flat has a large reception room that leads on to a separate kitchen and balcony. The bathroom is fully tiled and there is wooden flooring throughout.

Emlyn Gardens is on the borders of Shepherd's Bush and Chiswick giving excellent access to the amenities of Chiswick High Road and Uxbridge Road.

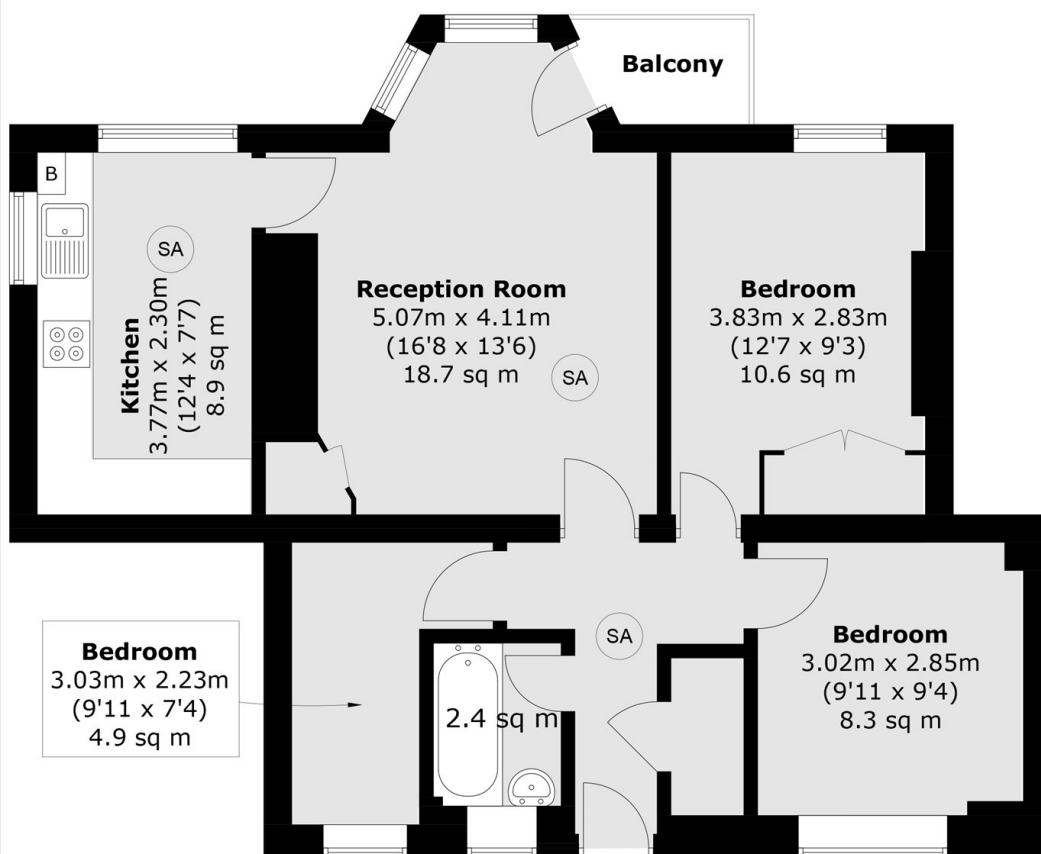
Features

Emlyn Gardens
Three Bedrooms
Outside Space
Wood Floors
Separate Kitchen
Ample Storage

Emlyn Gardens, London, W12



Smoke Alarm



Total area (approx.): 64.6 sq. m (695.3 sq. ft)
Balcony: 1.9 sq. m (20.4 sq. ft)

Dexters

Shepherds Bush and Brook Green
53 Shepherds Bush Green
London
W12 8PS
Lettings
020 8723 8899

Energy Rating: D. We aim to make our particulars both accurate and reliable. However they are not guaranteed; nor do they form part of an offer or contract. If you require clarification on any points then please contact us, especially if you're traveling some distance to view. Please note that appliances and heating systems have not been tested and therefore no warranties can be given as to their good working order.



Regulated
Estate Agent
and Letting Agent

[dexters.co.uk](https://www.dexters.co.uk)