



Addison Gardens, W14

£462 Per calendar month

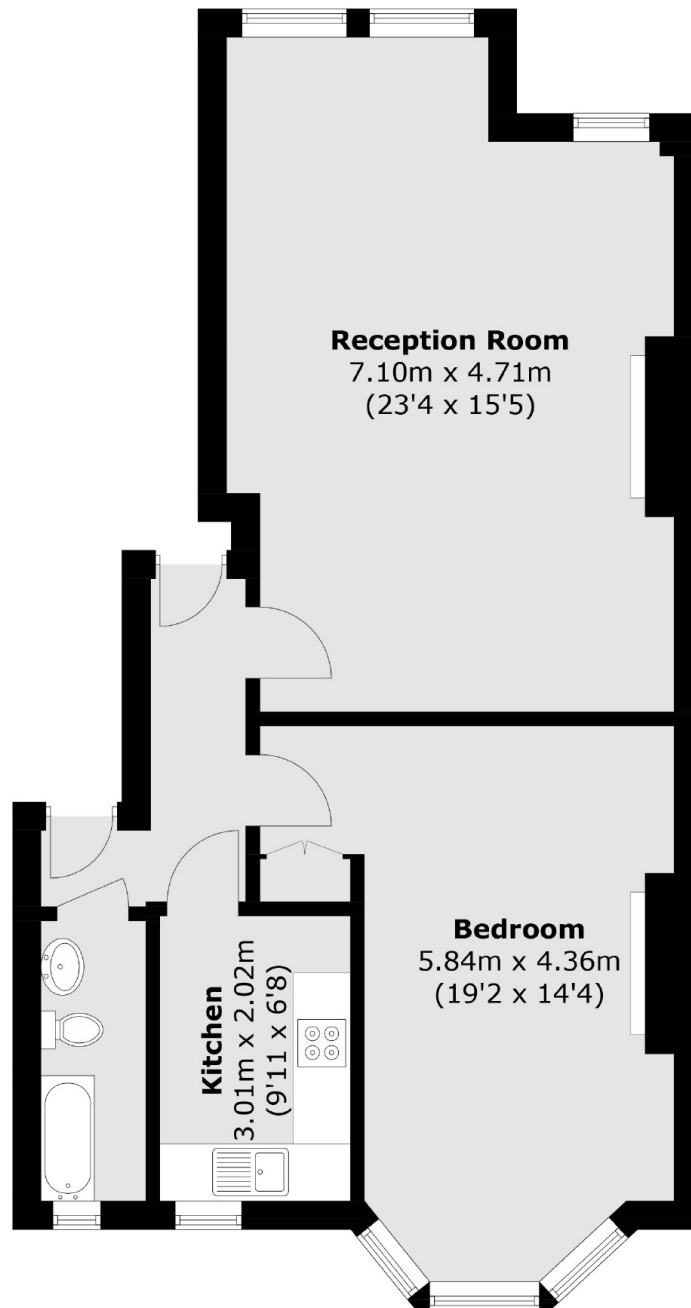
A larger than average one bedroom flat, located on a desirable residential road. The property offers wonderful period features including an enormous living room, a large bedroom and a fully fitted kitchen.

Located close to Kensington Olympia and Shepherds Bush Central line station, with easy access to Holland Park, Kensington High Street and Westfield Shopping Centre.

Features

Large And Bright
One Bedroom Flat
Open Plan Kitchen
Over 650 sq ft
Raised Ground Floor
Period Features

Addison Gardens, London, W14



Ground Floor

Total area (approx.): 66.7 sq. m (717.9 sq. ft)