



Shepherds Bush Road, W6

£323 Per week

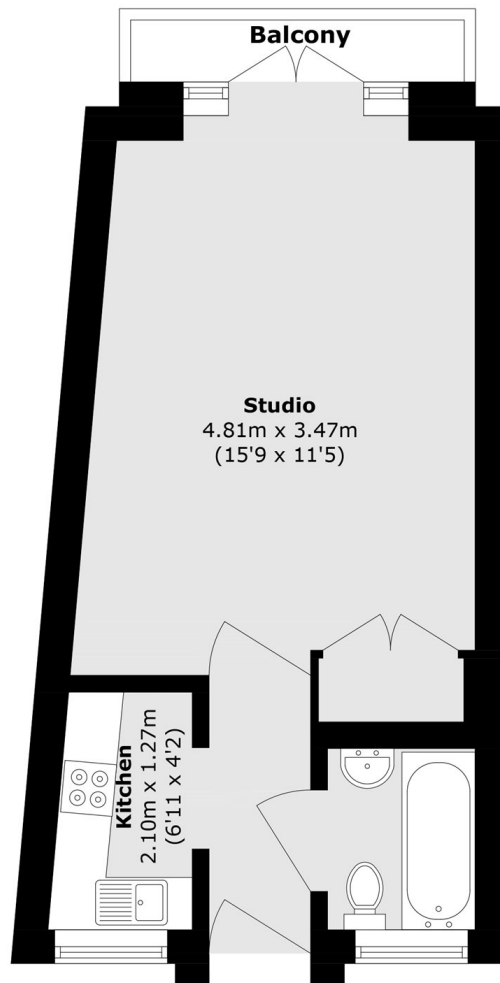
A large and bright studio apartment located within the popular Grampians Building on Shepherds Bush Road. It benefits from a spacious living area, and a Juliet balcony.

Ideally located for the amenities around Shepherd's Bush Green including the Westfield shopping centre, Shepherds Bush Market and the open space of Brook Green.

Features

- Ample Natural Light
- Large Studio
- Wood Floors
- Portered Building
- Ample Storage
- Neutral Decor

Shepherds Bush Road, London, W6



Fifth Floor

Total area (approx.): 25.2 sq. m (271.2 sq. ft)

Balcony area (approx.): 1.6 sq. m (17.2 sq. ft)