



## Sinclair Road, W14

£427 Per week

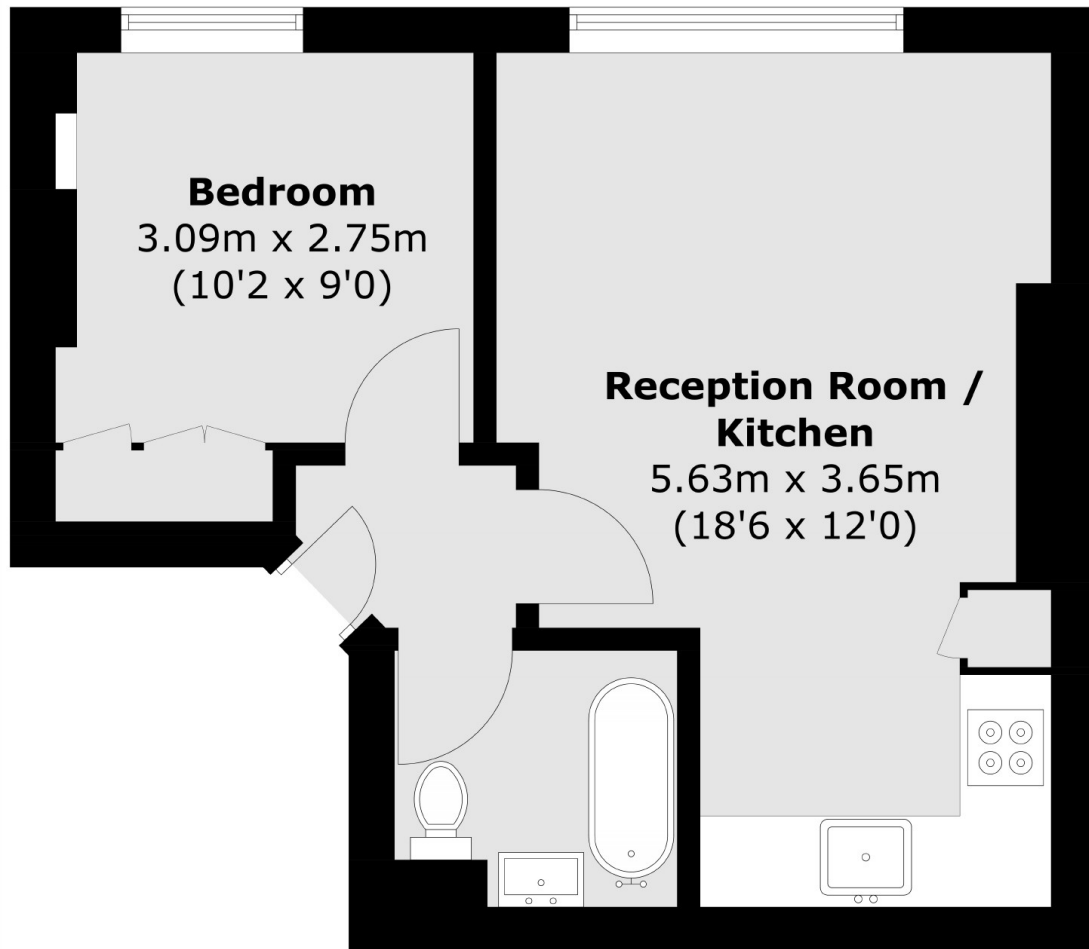
A lovely one bedroom apartment in the heart of Brook Green. This Victorian conversion apartment is beautifully presented and has open plan kitchen and living space, a double bedroom, storage and sash windows.

The property is located close to Brook Green and Kensington High Street is also within easy reach. The closest stations are to be found at Kensington Olympia, West Kensington and Shepherds Bush.

### Features

One Bedroom  
Victorian Conversion  
Second Floor  
Modern Kitchen  
Popular Street  
Kensington Olympia

Sinclair Road,  
London, W14



Total area (approx.): 31.6 sq. m (340.1 sq. ft)

**Dexters**

Shepherds Bush and Brook Green  
53 Shepherds Bush Green  
London  
W12 8PS  
Lettings  
020 8723 8899

Energy Rating: D. We aim to make our particulars both accurate and reliable. However they are not guaranteed; nor do they form part of an offer or contract. If you require clarification on any points then please contact us, especially if you're traveling some distance to view. Please note that appliances and heating systems have not been tested and therefore no warranties can be given as to their good working order.

 **RICS** | Regulated  
Estate Agent  
and Letting Agent

[dexters.co.uk](https://www.dexters.co.uk)