



## Collingbourne Road, W12

£750,000

This beautifully finished three-bedroom ground floor maisonette offers a bright, spacious interior with modern design throughout. The open-plan kitchen and dining area has been thoughtfully laid out to maximise space and light, with large windows and a skylight creating an airy, welcoming feel. Bi-folding doors open directly onto a private garden, ideal for indoor-outdoor living and entertaining.

Collingbourne Road is a quiet, residential road close to the local amenities of Uxbridge Road and Westfield Centre. The green spaces of Wormholt and Hammersmith Parks and the cafes and restaurants of Askew Village are

### Features

Well Maintained  
Open-Plan Kitchen  
Bi-folding Doors  
Three Bedrooms  
Modern Design  
Large Windows



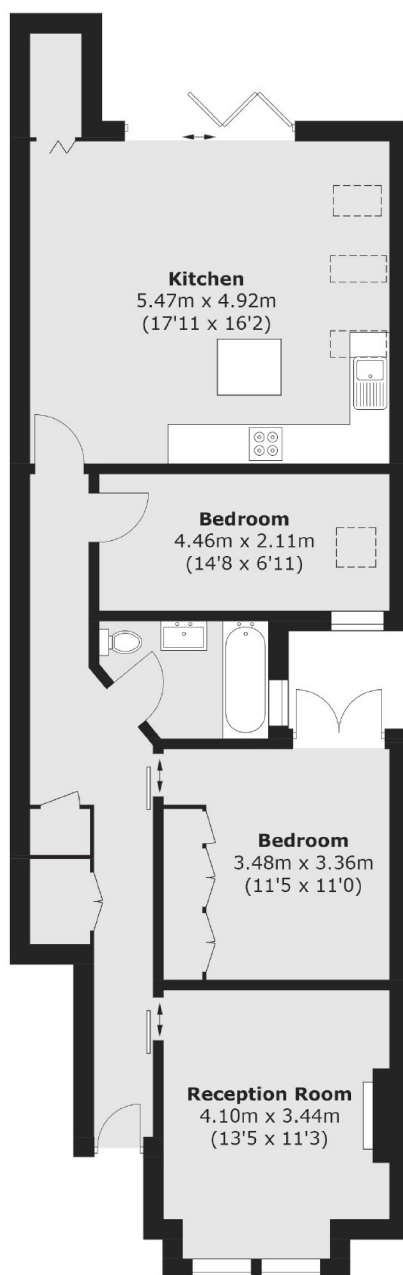
## Collingbourne Road, W12

All three bedrooms are well-proportioned, with clean lines and contemporary finishes that run consistently throughout the property. The home has been carefully maintained and is ready to move into without the need for updating.





# Collingbourne Road, London, W12



Total area (approx.): 84.0 sq. m (904.2 sq. ft)

## Dexters

Shepherds Bush and Brook Green  
53 Shepherds Bush Green  
London  
W12 8PS  
Sales  
020 8740 2900

Energy Rating: C. We aim to make our particulars both accurate and reliable. However they are not guaranteed; nor do they form part of an offer or contract. If you require clarification on any points then please contact us, especially if you're traveling some distance to view. Please note that appliances and heating systems have not been tested and therefore no warranties can be given as to their good working order.

 **RICS** | Regulated  
Estate Agent  
and Letting Agent

[dexters.co.uk](https://www.dexters.co.uk)